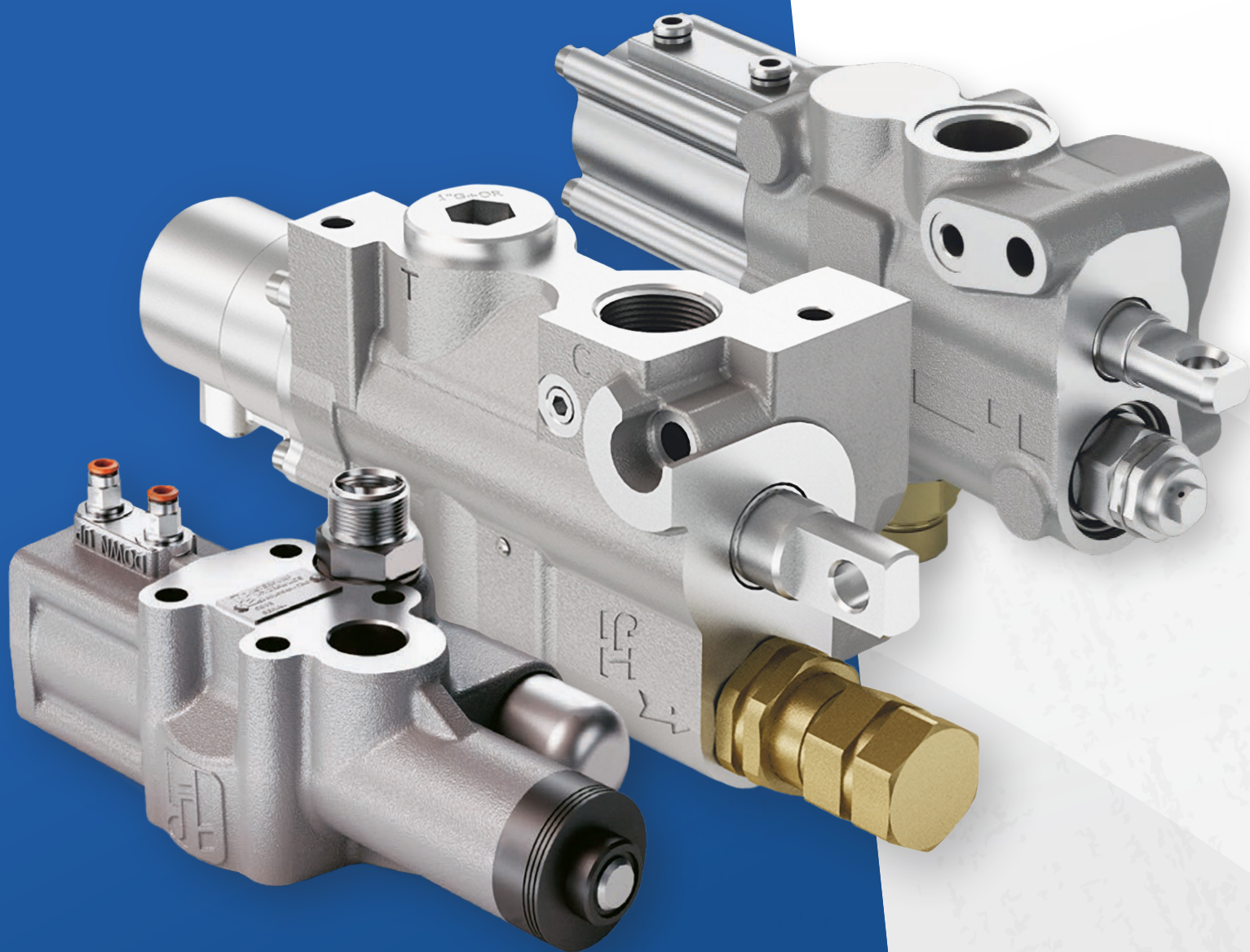


TIPPER VALVES



D140 SERIES | D242 SERIES | DS16 SERIES

D140 SERIES

The D140 Series tipper valve is designed to be lightweight with high working pressure. This tipper valve can easily be mounted to the frame or chassis.

KEY FEATURES

- Pneumatically operated tipper valve
- Performs tipping, fast lowering, and progressive lowering
- End-of-stroke rope
- Built-in inlet check valve and adjustable relief valve
- Manometer connection

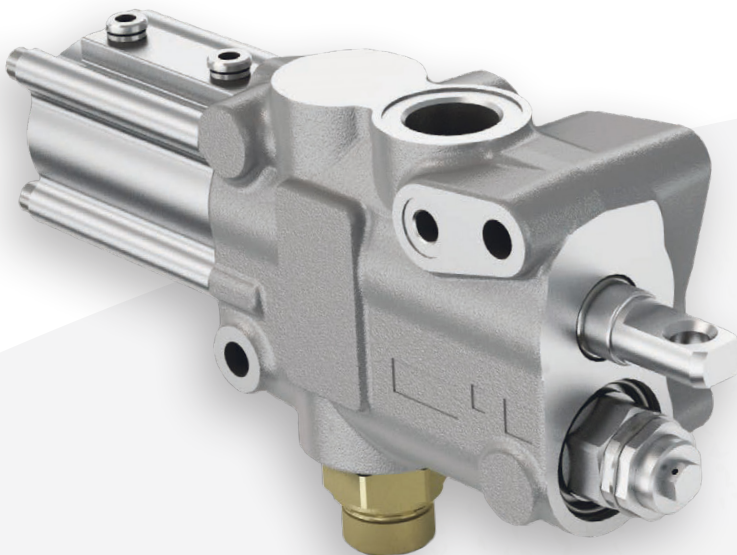
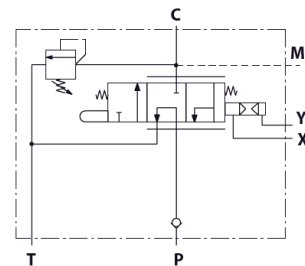
TARGET MARKETS

- Agriculture
- Dump & Construction
- Bulk Handling
- Marine
- Mining
- Refuse

SPECIFICATIONS

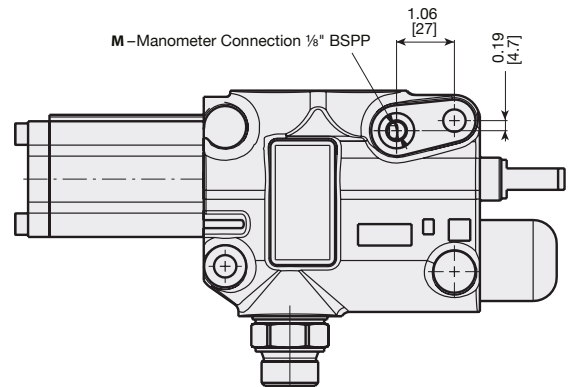
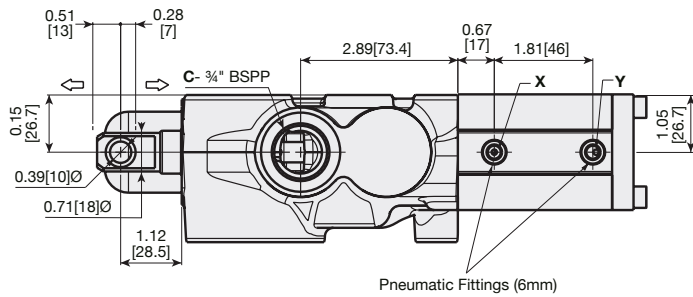
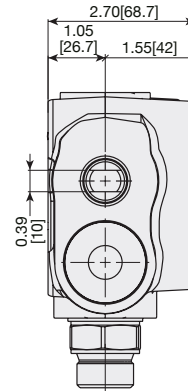
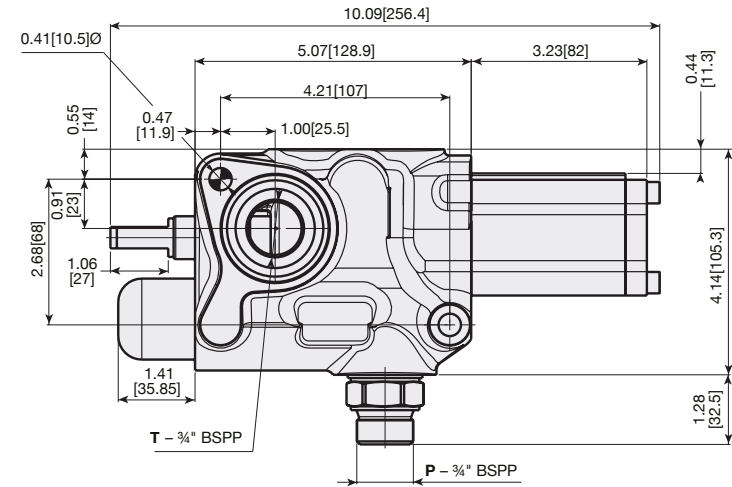
FLOW RATE	OPERATING TEMPERATURES
37 GPM (140 LPM)	-13° F to +176° F (-25° C to +80° C)
MAX. WORKING PRESSURE	VISCOSITY RANGE
5,076 PSI (350 BAR)	12–100 cSt
TANK PORT MAX. PRESSURE	APPROXIMATE WEIGHT
435 PSI (30 BAR)	11.24 lbs. (5.1 Kg.)
MAX. PNEUMATIC PRESSURE	
145 PSI (10 BAR)	

CONTROL SETTING



THE D140 SERIES
TIPPER VALVE IS IDEAL FOR
DEDICATED DUMP TRUCKS

D140 SERIES DIMENSIONS



C = Cylinder **X** = Tipping
P = Pump **Y** = Lowering
T = Tank

Note: Oil ports **C**, **P**, & **T** can be changed to 3/4" JIC and air ports **X** and **Y** to 1/4" per part number construction (the D140 Series only)

MODEL NUMBER CONSTRUCTION

D140 - P - 0 - 020 - A5 - 0 - P - 0

Series

D140 — Tipper Valve

Control Setting

P — Pneumatic Control

Pressure

0 — Single Pressure

Relief Pressure Setting

020 — 200 BAR

Special Feature

0 — None

Sealed Relief Valve

P — Standard

Pressure Switch Gauge

0 — Provision for Pressure Switch

Inlet Gauge Options

A5 — 3/4" BSPP Oil Ports and 6mm Air Fittings
 AJ — 3/4" JIC Oil Ports and 1/4" Air Fittings

D242 SERIES

The D242 Series is a versatile tipper valve that is ideal for applications ranging from dump trailers to live-floor to roll-off. Its high flow rate and high-pressure capabilities allow for larger loads.

KEY FEATURES

- Three-way air operated control valve: pump, cylinder, tank
- Three positions: hold, tipping, and lowering
- Built-in check valve
- Variable lowering speed with suitable air control
- Relief valve on pump port
- Manometer connection

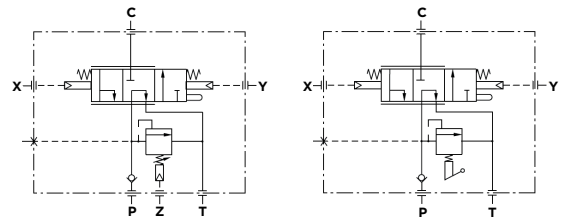
TARGET MARKETS

- Agriculture
- Dump & Construction
- Bulk Handling
- Marine
- Mining
- Refuse

SPECIFICATIONS

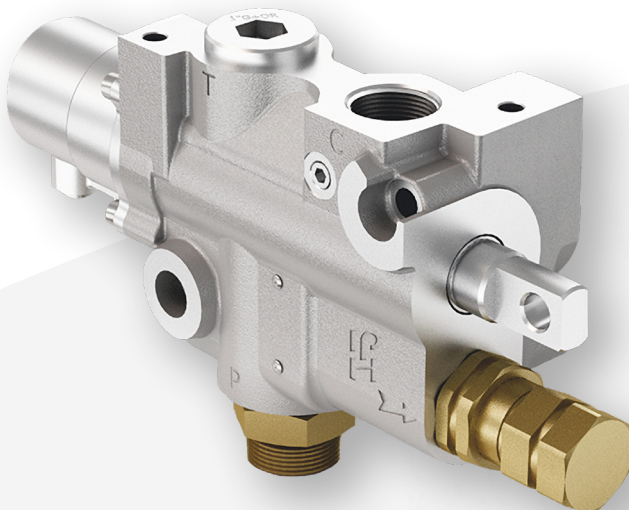
FLOW RATE	OPERATING TEMPERATURES
42-63 GPM (160-240 LPM)	-13° F to +176° F (-25° C to +80° C)
LOWERING MAX. FLOW RATE	VISCOSITY RANGE
66-79 GPM (250-300 LPM)	12-100 cSt
MAX. WORKING PRESSURE	APPROXIMATE WEIGHT
5,076 PSI (350 BAR)	18.08 lbs. (8.2 Kg.)
TANK PORT MAX. PRESSURE	MAX. PNEUMATIC PRESSURE
435 PSI (30 BAR)	65-174 PSI (4.5-12 BAR)

CONTROL SETTINGS



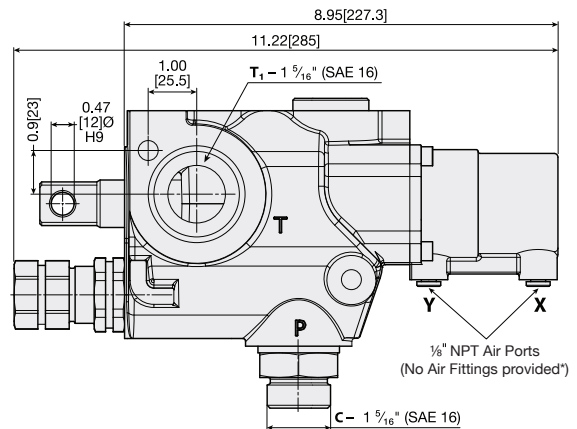
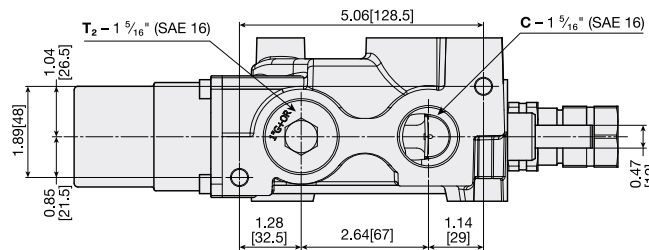
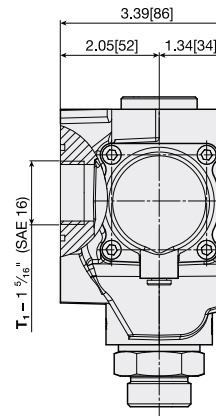
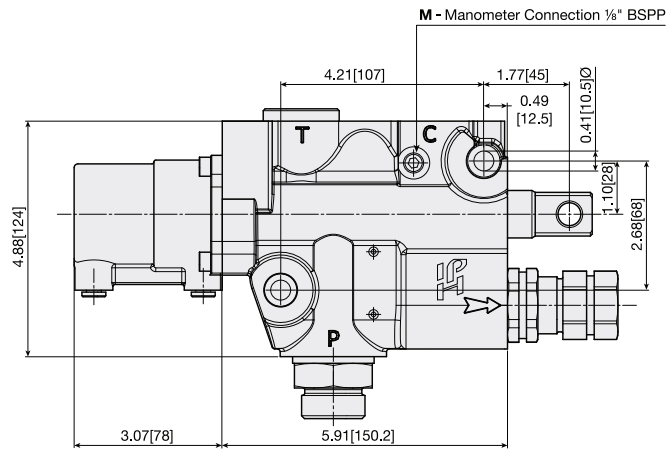
M2

P2



THE D242 SERIES
TIPPER VALVE IS PERFECT
FOR TRUCKS THAT NEED TO
SWITCH BETWEEN TRAILERS

D242 SERIES DIMENSIONS



C = Cylinder **X** = Tipping
P = Pump **Y** = Lowering
T = Tank

* 44MB6842PTC straight or 44MB6942PTC 90° fittings are available for purchase

MODEL NUMBER CONSTRUCTION

D242 - M2 - 3 - 2 - DJ0

Series

D242 — Tipper Valve

Control Settings

M2 — Double Mechanical Setting
 P2 — Double Pneumatic Setting

Oil Port

3 — 1 5/16" SAE

Relief Valve Setting

DJ0 — Relief Valves Set at 140 BAR and 200 BAR

Air Port

2 — 1/8" NPT

DS16 SERIES

Designed to mount directly to the Series 5 Pin-pin Cylinder, the DS16 Series tipper valve provides a working pressure that matches the cylinder. It is lightweight and comes standard with a higher flow rate than average mid-size tipper valves leading to a faster cylinder operation.

KEY FEATURES

- Pneumatically operated 42 GPM (160 LPM) distributor for tipping vehicles
- Built-in inlet check valve and relief valve
- Optional kit to convert to pneumatic end-of-stroke
- Manometer connection

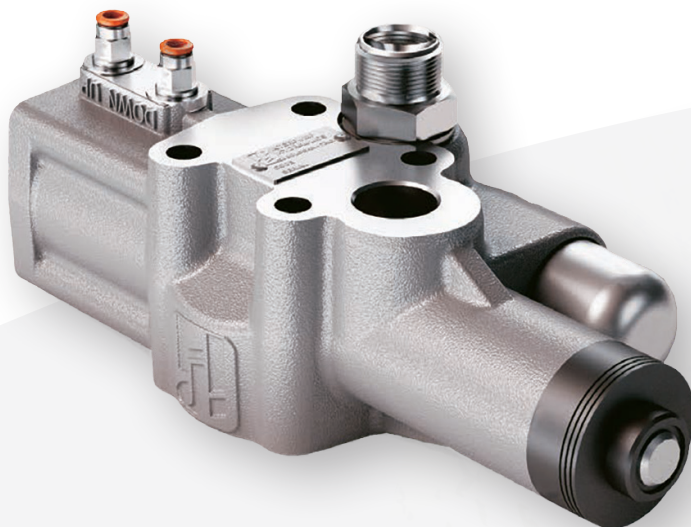
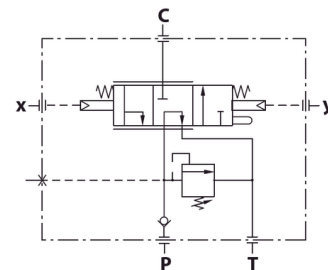
TARGET MARKETS

- Agriculture
- Dump & Construction
- Bulk Handling
- Marine
- Mining
- Refuse

SPECIFICATIONS

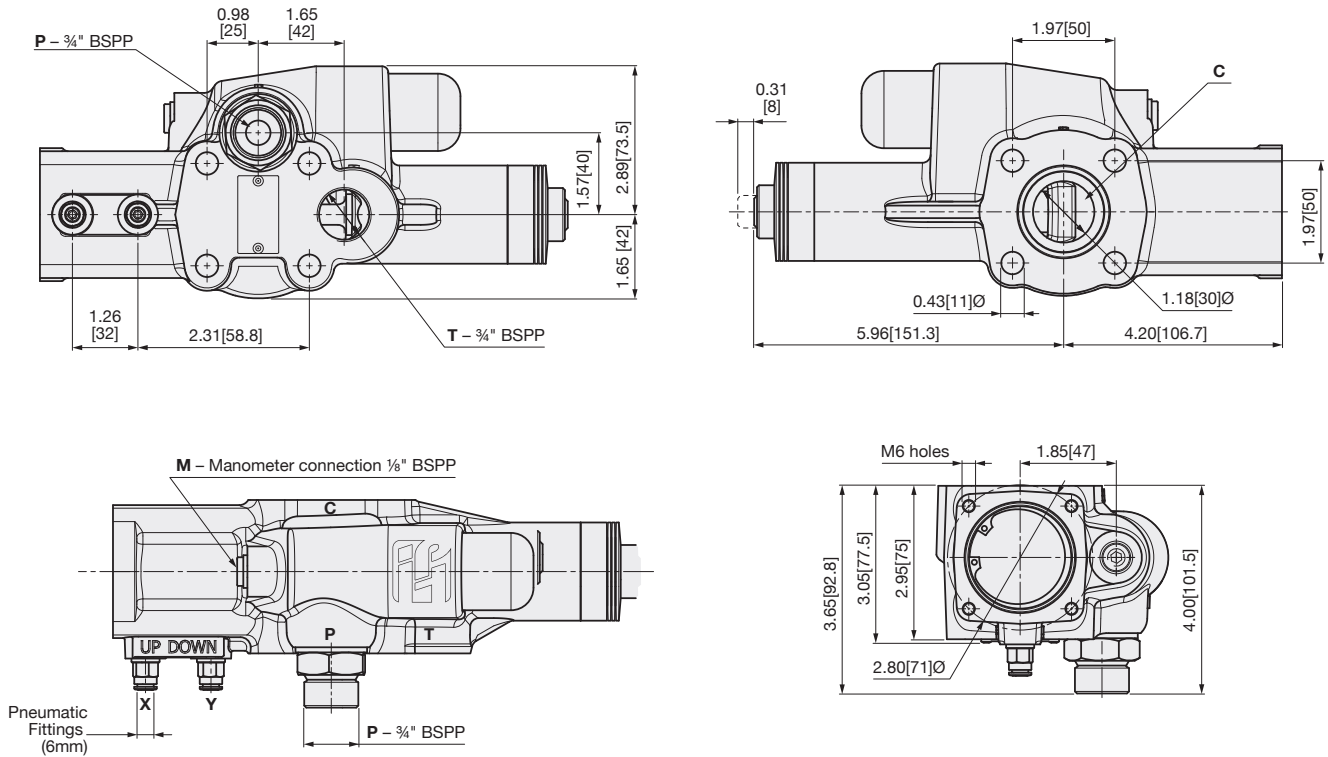
FLOW RATE	OPERATING TEMPERATURES
42 GPM (160 LPM)	-13° F to +176° F (-25° C to +80° C)
MAX. WORKING PRESSURE	VISCOSITY RANGE
3,625 PSI (250 BAR)	12–100 cSt
TANK PORT MAX. PRESSURE	APPROXIMATE WEIGHT
435 PSI (30 BAR)	11.2 lbs. (5.8 Kg.)
MAX. PNEUMATIC PRESSURE	
174 PSI (12 BAR)	

CONTROL SETTING



THE DS16 SERIES
TIPPER VALVE IS IDEAL FOR
DEDICATED DUMP TRUCKS
WHERE SPACE IS LIMITED

DS16 SERIES DIMENSIONS



C = Cylinder
P = Pump
T = Tank

Note: Oil ports **P** & **T** can be changed to 3/4" JIC and air ports **X** and **Y** to 1/4" per part number construction

MODEL NUMBER CONSTRUCTION

DS16 - F - 0 - 019 - A5 - 0 - 0 - 0

Series

DS16 — Tipper Valve

Control Setting

F — Pneumatic Control

Pressure

0 — Single Pressure

Relief Pressure Setting

019 — 190 BAR

Special Feature

0 — None

Sealed Relief Valve

0 — Without end-of-stroke *

Pressure Switch Gauge

0 — Provision for Pressure Switch

Inlet Gauge Options

A5 — 3/4" BSPP Oil Ports and 6mm Air Fittings

AJ — 3/4" JIC Oil Ports and 1/4" Air Fittings

* Kit 30KFCPS1600000 can be ordered to convert to pneumatic end-of-stroke



**Muncie[®]
Power
Products**

A Member of the Interpump Group

MP25-06 (Rev. 11-25)

201 East Jackson Street, Muncie, Indiana 47305
800-367-7867 • Fax: 765-284-6991 • info@munciepower.com
Specifications are subject to change without notice.
Visit www.munciepower.com for warranties and literature.
All rights reserved. © Muncie Power Products, Inc. (2025)