



P58/P60 SERIES PTO FLANGE INSTALLATION

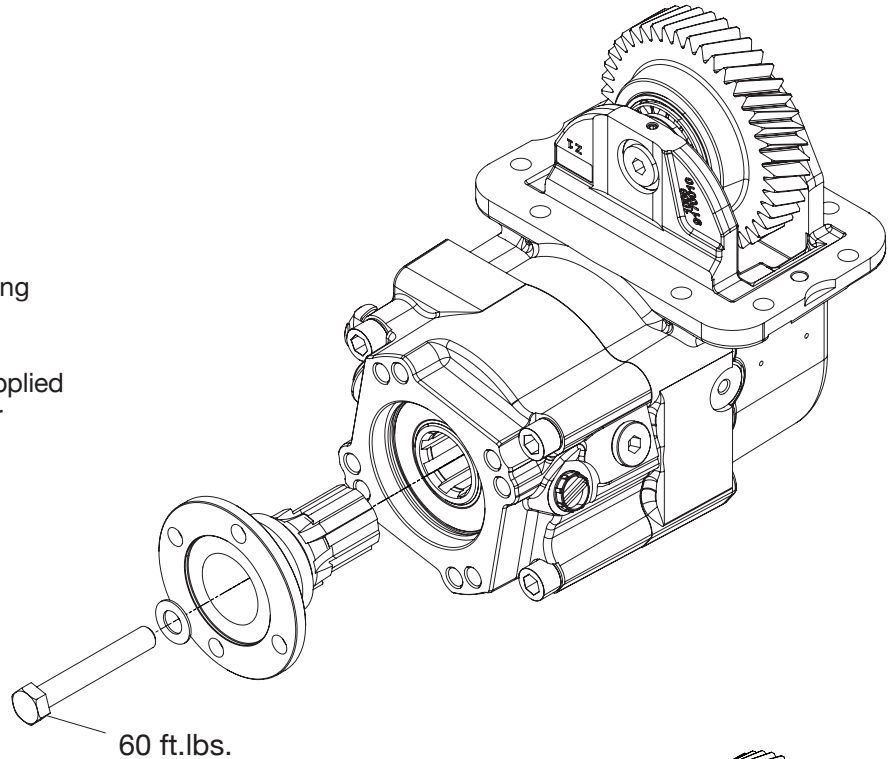
This instruction covers the correct method for installation of the flange in P58 Series PTOs.

⚠ NEVER GO UNDER VEHICLE WITH ENGINE RUNNING!

1310 Companion Flange 197KFL78000

List of required tools:
19mm Deep Well Socket
Foot-Pounds Torque Wrench

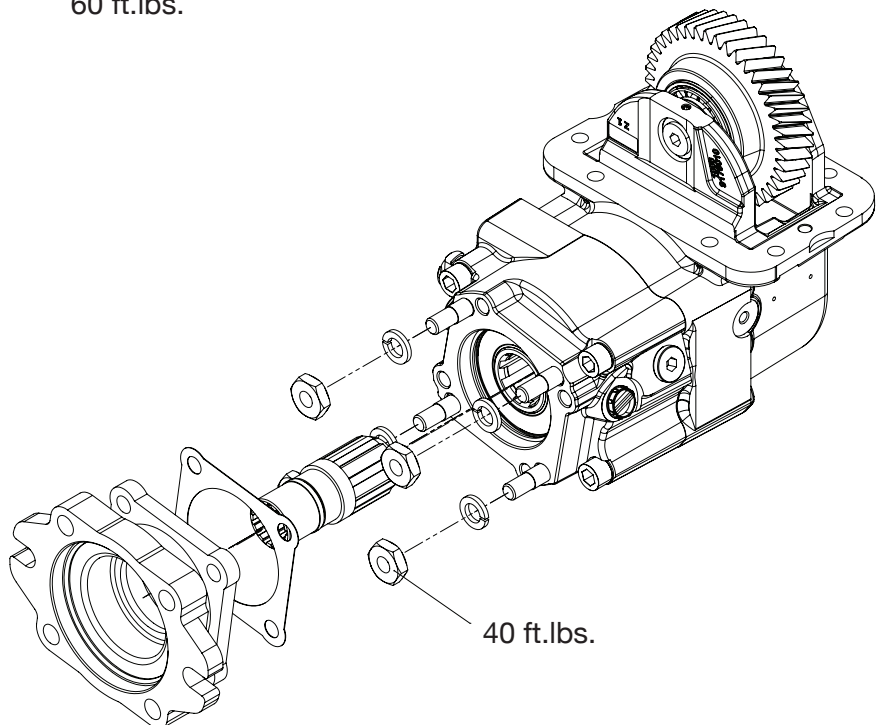
1. Install adapter flange on PTO using supplied cap screw.
Torque cap screw to 60 ft.lbs.
2. Apply anti-seize grease to the supplied adapter shaft, then install adapter shaft in PTO output shaft.



SAE B Adapter 606X80A000

List of required tools:
 $\frac{5}{8}$ " Combination Wrench
 $\frac{5}{8}$ " Crows Foot or Torque Adapter
Foot-Pounds Torque Wrench

1. Install studs in PTO using supplied cap screws.
2. Install flange with gasket.
3. Install flange using supplied lock washers and nuts. Torque to 40 ft.lbs. **Do not install adapter shaft in PTO if truck is to be driven without pump in place!**



A Member of the Interpump Group

IN22-06 (Rev. 05-24)

201 East Jackson Street, Muncie, Indiana 47305
800-367-7867 • Fax: 765-284-6991 • info@munciepower.com

Specifications are subject to change without notice. Visit www.munciepower.com for warranties and literature. All rights reserved. © Muncie Power Products, Inc. (2022)