



Muncie®
Power
Products

SERIES 5 SINGLE ACTING TRUNNION TELESCOPIC CYLINDERS (5.5-7.5 MODELS)

DISASSEMBLY AND REASSEMBLY
INSTRUCTIONS MANUAL





SERIES 5 SINGLE ACTING TRUNNION TELESCOPIC CYLINDERS (5.5-7.5 MODELS) DISASSEMBLY AND REASSEMBLY INSTRUCTIONS MANUAL

TABLE OF CONTENTS

Warning & Safety Recommendations	4
Preliminary Instructions	4
Rebuild Instructions	4
Repair Kits.....	5
Tools Used	6
Disassembly Instructions.....	7
Reassembly Instructions	18
Additional Information.....	26
Troubleshooting Information.....	26

Warning & Safety Recommendations

When conducting the disassembly and reassembly of a cylinder, it is your responsibility to ensure that you use the proper tools for the job and conduct the job in a safe manner. It is highly recommended that you use safety glasses and wear nonslip steel-toe shoes. Because of the weight of most cylinders, it is highly recommended that you use lifting equipment to move the complete cylinder and its individual stages in order to prevent injury. Please exercise extreme caution during the disassembly and assembly process to ensure your safety and prevent damage to the stages.

Preliminary Instructions

Prior to disassembly, the cylinder must be removed from the truck, drained, and cleaned. Use water and a nonflammable cleaning agent to clean the cylinder. Use a table or bench that is strong enough to hold the weight of a cylinder. The table must be clean and free of debris that may cause damage to the stages or internal components of the cylinder. Any scoring, pitting, or scratches sustained to the stages during a disassembly and reassembly of a cylinder are the sole responsibility of the individual(s) involved in the rebuild process. Damage to the stages can result in damage to internal components, thus causing leaks.

Rebuild Recommendations

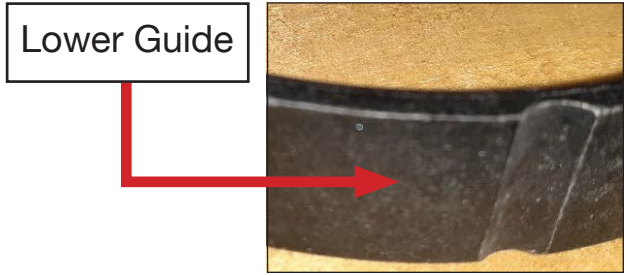
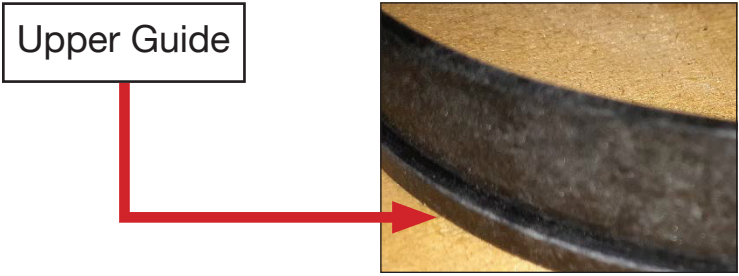
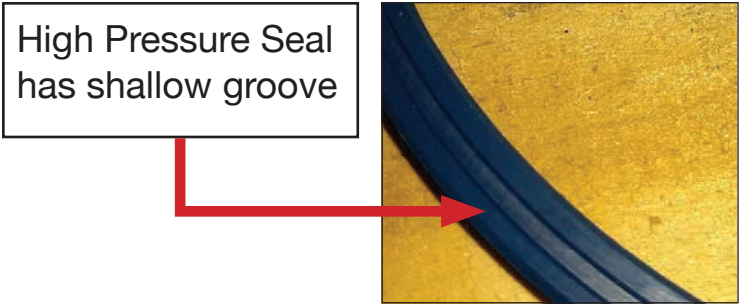
It is highly recommended that you conduct a complete rebuild if disassembling a cylinder for any reason. A complete rebuild includes replacement seals, wipers, and guide rings because these are the components that are subject to wear. The seal kit includes only the seals and wipers needed for a cylinder.

It is also recommended that if disassembling due to a leak in one stage, it would be best to replace all internal components instead of just the ones that have failed. It is also highly recommended that you use only genuine Muncie Power Products parts and do not tamper with or modify them. Failure to do so will result in a voided warranty. When ordering rebuild kits, always mention the part number and serial number of the cylinder. These can be found on the tag that is spot welded to the housing.

Muncie Power Repair Kits

Cylinder Series	Complete Rebuild Kit #	Seal Kit Only#
5.5	RBK-553-30	GSK-553-30
6.5	RBK-654-30	GSK-654-30
7.5	RBK-754-30	GSK-754-30

Recommended kit is the "Complete Rebuild Kit"						
	RBK-553-30	GSK-553-30	RBK-654-30	GSK-654-30	RBK-754-30	GSK-754-30
"Stage" Diameter Used With						
High Pressure Seals	1.17" (45mm)					
	2.36" (60mm)					
	2.95" (75mm)					
	3.54" (90mm)					
	3.86" (98mm)	1	1	1	1	
	4.57" (116mm)	1	1	1	1	1
	5.31" (135mm)	1	1	1	1	1
	6.06" (154mm)			1	1	1
6.85" (174mm)					1	1
Wipers	1.17" (45mm)					
	2.36" (60mm)					
	2.95" (75mm)					
	3.54" (90mm)					
	3.86" (98mm)	1	1	1	1	
	4.57" (116mm)	1	1	1	1	1
	5.31" (135mm)	1	1	1	1	1
	6.06" (154mm)			1	1	1
6.85" (174mm)					1	1
Top Flange Seal	1.17" (45mm)					
	2.36" (60mm)					
	3.86" (98mm)	1	1	1	1	
	4.57" (116mm)					1
Small Stage Plate Seal	1.17" (45mm)					
	2.36" (60mm)					
	3.86" (98mm)	1	1	1	1	
	4.57" (116mm)					n/a
Base Plate Seal	3.5 Size					
	4.5 Size					
	5.5 Size	1	1			
	6.5 Size			1	1	
	7.5 Size					1
Lower (OD) Guide Rings	1.17" (45mm)					
	2.36" (60mm)					
	2.95" (75mm)					
	3.54" (90mm)					
	3.86" (98mm)	2		2		
	4.57" (116mm)	2		2		2
	5.31" (135mm)	2		2		2
	6.06" (154mm)			2		2
6.85" (174mm)					2	
Upper (ID) Guide Rings	1.17" (45mm)					
	2.36" (60mm)					
	2.95" (75mm)					
	3.54" (90mm)					
	3.86" (98mm)	3		3		
	4.57" (116mm)	3		3		3
	5.31" (135mm)	3		3		3
	6.06" (154mm)			3		3
6.85" (174mm)					3	
TOTAL No. of Components	24	9	31	11	30	10



Tools Used

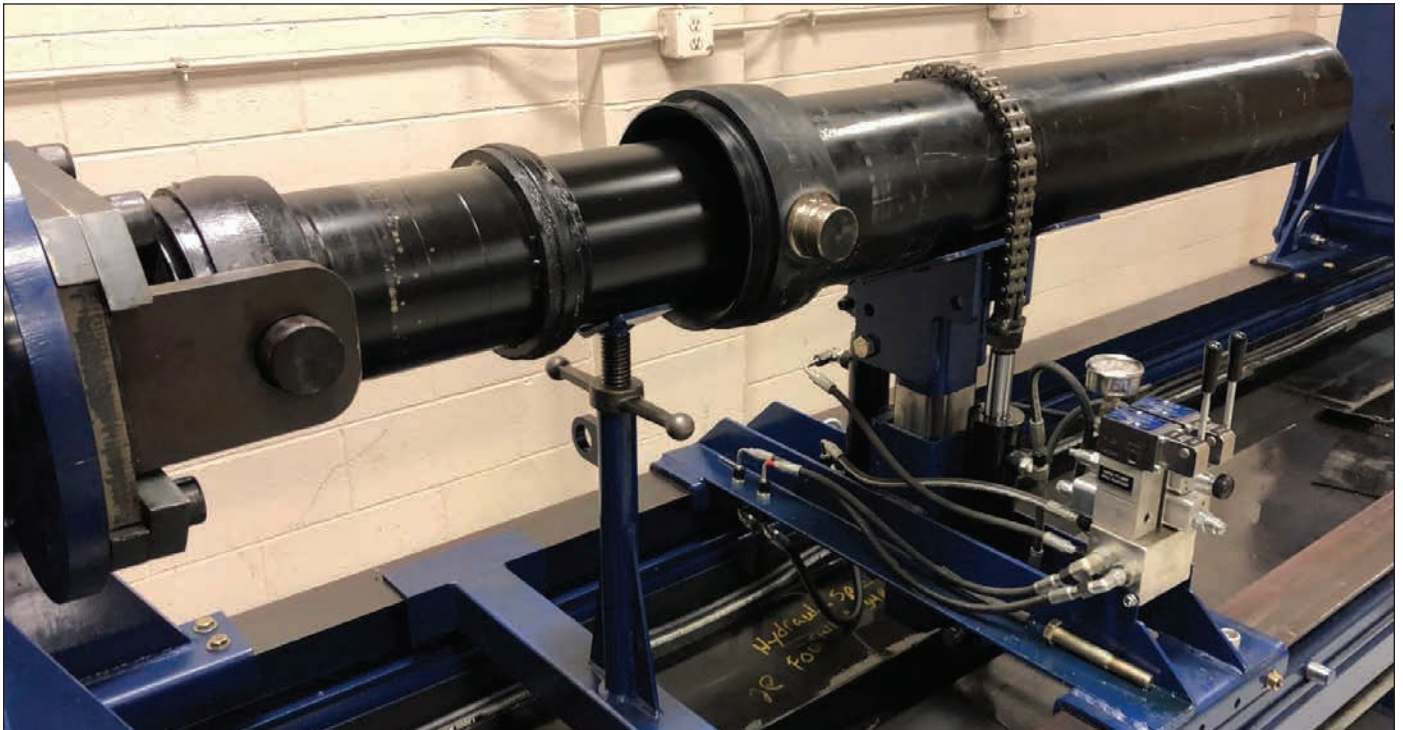
Below are tools commonly used to disassemble and reassemble a Muncie Power cylinder. It should be noted that due to the weight and construction of the trunnion cylinders (with the outer covering), it is highly recommended that you use a work bench or test stand designed for the purpose of working on telescopic cylinders. Additionally, proper lifting equipment should also be used to lift and move heavy objects. Safety glasses and nonslip steel-toe shoes are also recommended.



List of Tools Used
Hard Plastic Driver
3 lbs. Sledge Hammer
Small, Medium, and Large Straight Blade Screw Drivers
Standard Hammer
90° Pick
8mm Allen Head Screw Driver
10mm Allen Head Screw Driver
Hoist

DISASSEMBLY

1. Secure the trunnion cylinder as shown in the picture below, or in a similar manner as is shown. Note that the main housing of the cylinder is being supported by a mechanical jack while the outer “bell” housing cover (in this document called the outer cover) is being supported by a hydraulic jack. Each need to be individually supported, and the outer cover will need a strap or chain securing it in place.



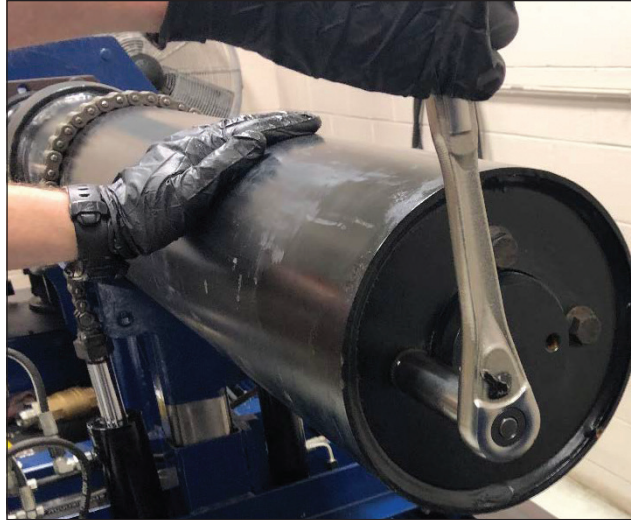
2. Remove the white plastic protective cap from the top of the cylinder to expose the 4 bolts that hold the outer cover onto the cylinder.



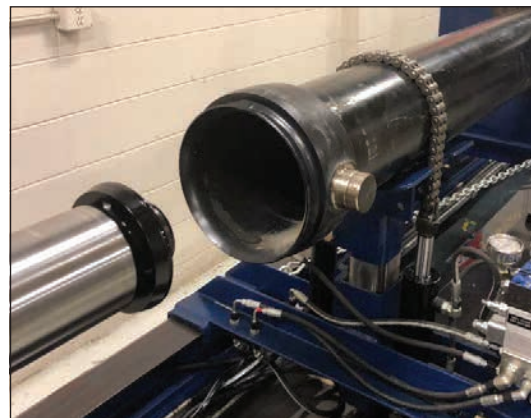
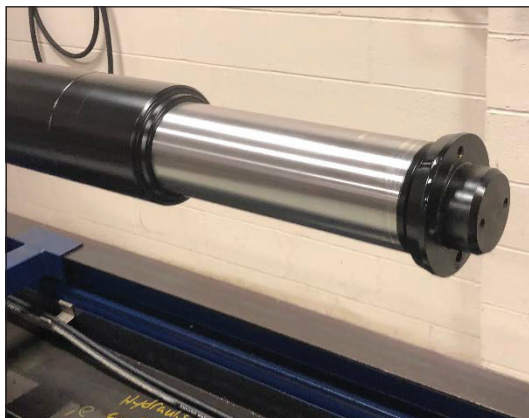
DISASSEMBLY

3. Remove the bolts from the cylinder using a ratchet with a 19mm socket.

Series	Size
5.5	M12
6.5 & 7.5	M14



4. With the bolts removed from the cylinder, you can now pull the outer cover off of the assembly. Be careful when removing the outer cover as it may be heavy. Additionally, take care not to damage the stages of the cylinder, as several of them could be exposed.

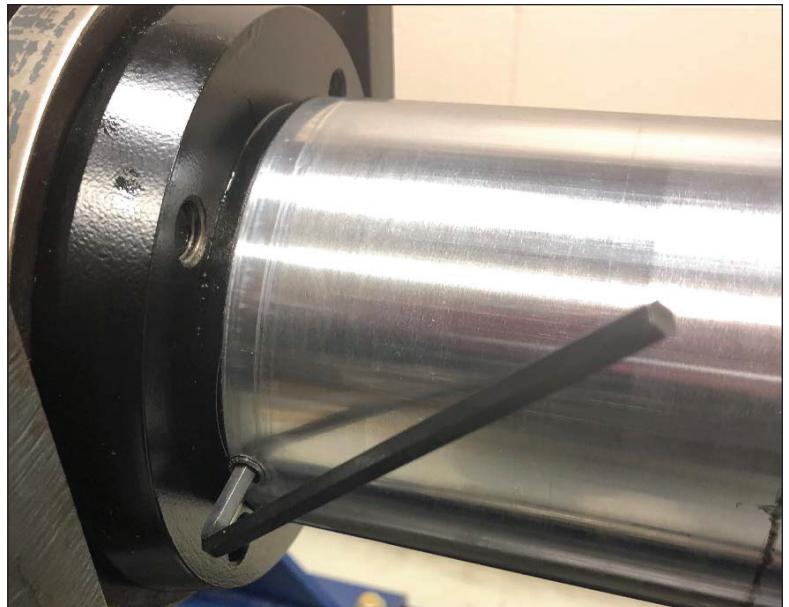


DISASSEMBLY

5. If not already done, be sure to drain the oil and leave the plug out of the port prior to moving on to any further steps.

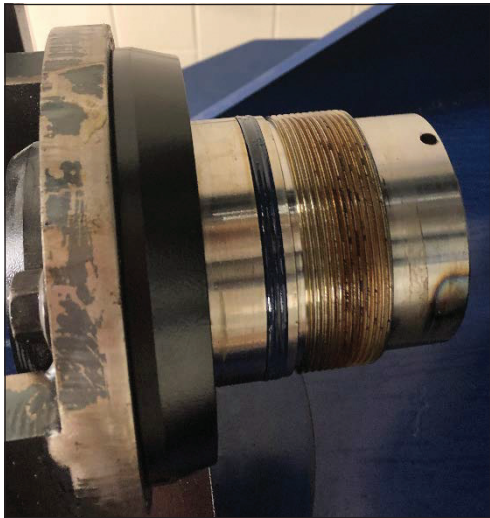
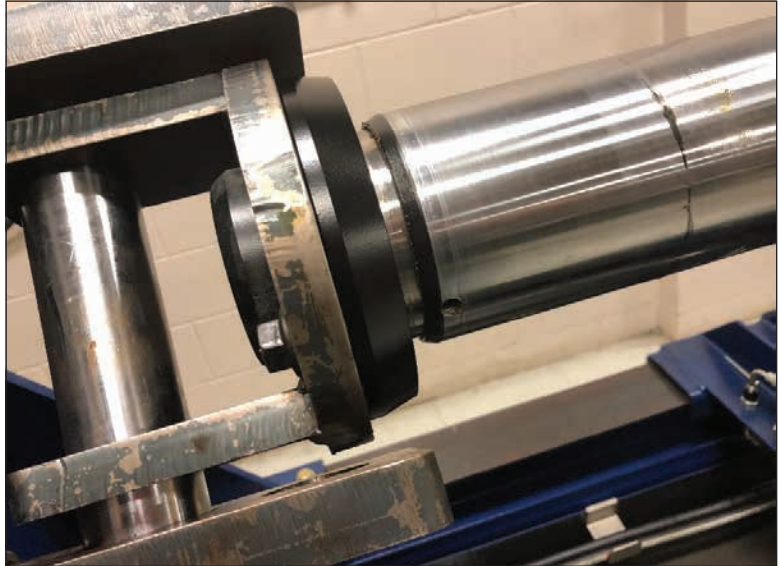


6. Extend or pull open the cylinder to expose several feet of the smallest stage, so you can access the set screw.
7. Use a 5mm Allen wrench to remove the set screw.



DISASSEMBLY

8. Secure the smallest stage so it will not rotate. Be sure to use a protective material on the stage so it does not become damaged.
9. Now, begin to remove the top flange from the smallest stage. The flange is held in with standard thread and tread lock. You may need to apply heat to remove.



DISASSEMBLY

10. At the base of the cylinder, use a stiff elastic rod and a hammer, or make use of a press, to push the bottom plate into the cylinder 0.5"-1" to access the snap ring.



11. Remove the snap ring.



DISASSEMBLY

12. Now remove the base plate using a plate extraction tool, or with a press, push the stages back into the cylinder and press the bottom plate out of the cylinder.



DISASSEMBLY

13. Use the stiff elastic rod to drive the smallest stage toward the top of the cylinder. This will allow access to the snap ring. Using a straight blade screw driver, remove the snap ring. Use caution during removal as the snap ring may launch out of its seat.



NOTE: The rod stage base plate and the snap ring with eyelets DO NOT need to be removed. If you do remove the plate, you can replace or reuse the seal on the plate.

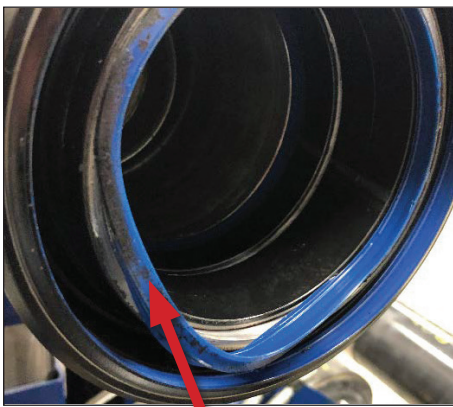
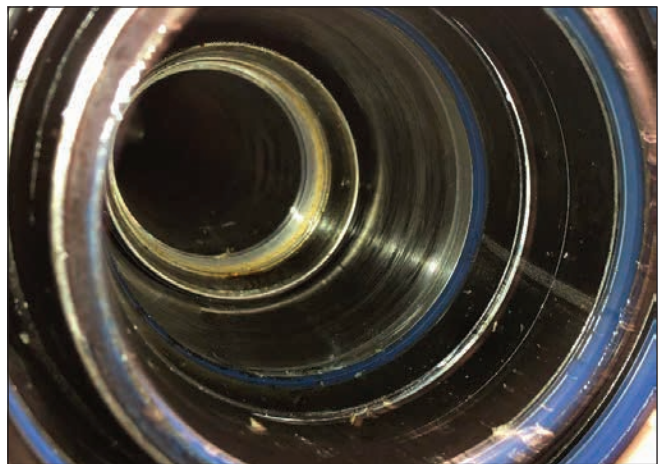


DISASSEMBLY

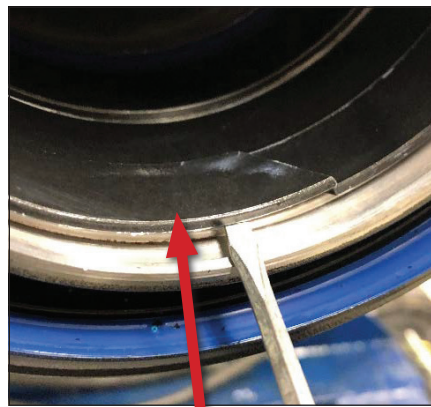
14. Using the stiff elastic rod and the hammer, drive the small stage back toward the bottom of the cylinder. Once the stage has made it past the seal, the stage can be pulled out by hand. Use caution as the weight of the various stages may require the use of a lifting device.



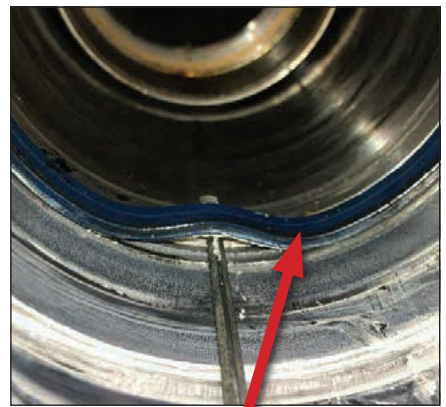
15. Remove the wiper, the guide rings, and the high pressure seal from the top end of the stage in the cylinder.



Wiper



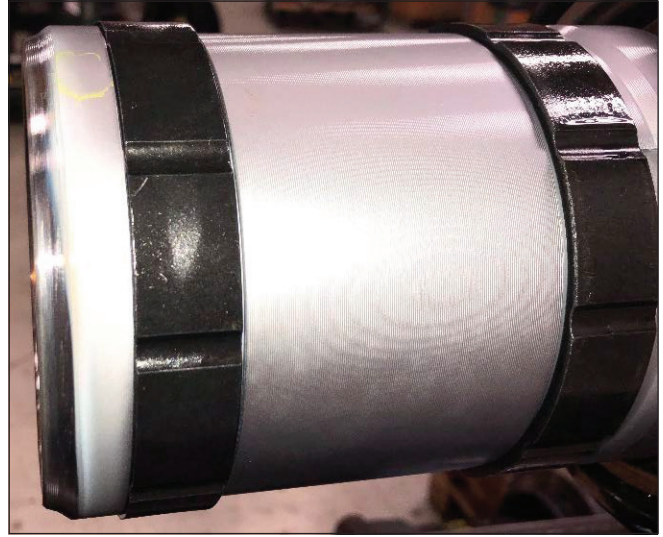
Guide Rings



High Pressure Seal

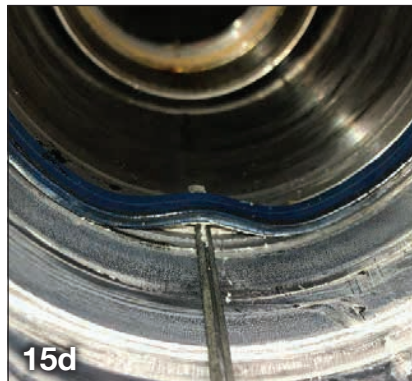
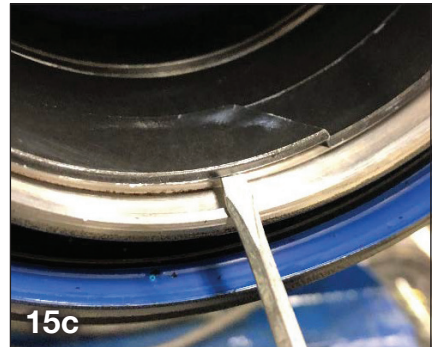
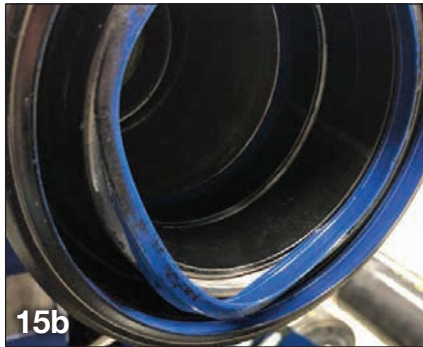
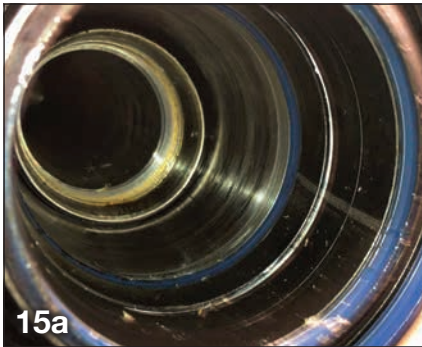
DISASSEMBLY

16. Remove guide rings from the bottom of the stage that was removed from the cylinder.



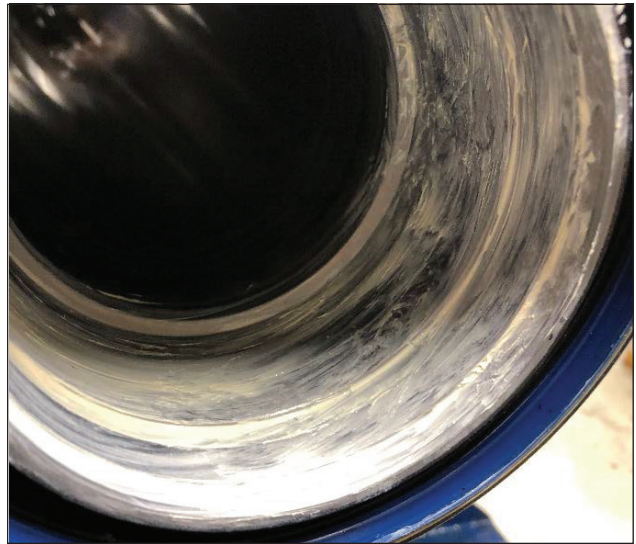
DISASSEMBLY

17. Repeat steps 13–16 until all stages have been removed from the cylinder. Always work from the smallest diameter out to the largest diameter stage during disassembly.

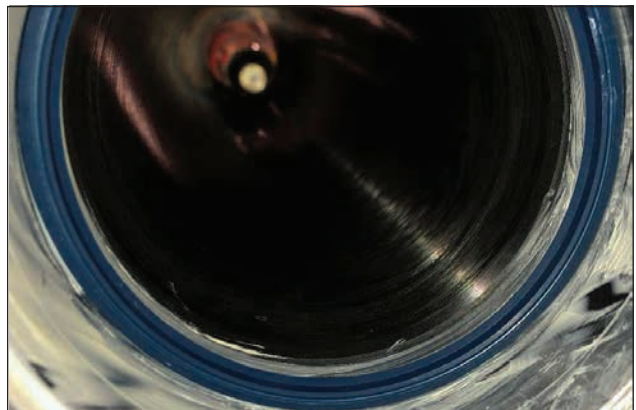


REASSEMBLY

18. After having disassembled the various components of the cylinder, it is very important to clean the stages with water and a nonflammable cleanser. Be sure to check for any defects in the stages. Any scratches, distortions, or dents may cause leaks.
19. With the stages and housing now clean, begin reassembly of the cylinder. Start with the largest stage and work toward the smallest.
20. Make sure that the main housing of the cylinder is held securely to the work bench.
21. Start by applying white lithium grease to the internal surface where the high pressure seal, wear rings, and wiper will be installed.



22. Install the high pressure seal. The flat end of the seal will need to face the top of the cylinder while the groove end of the seal faces the bottom of the cylinder.

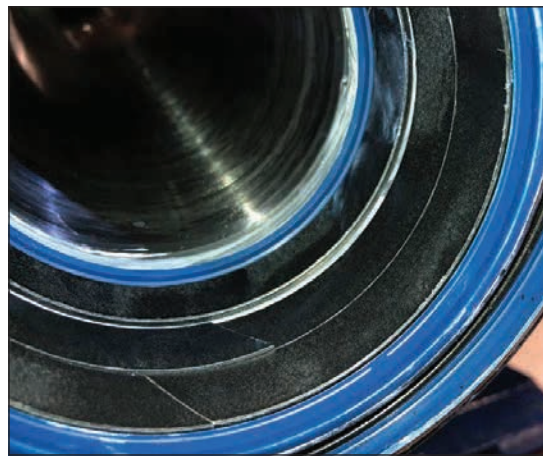
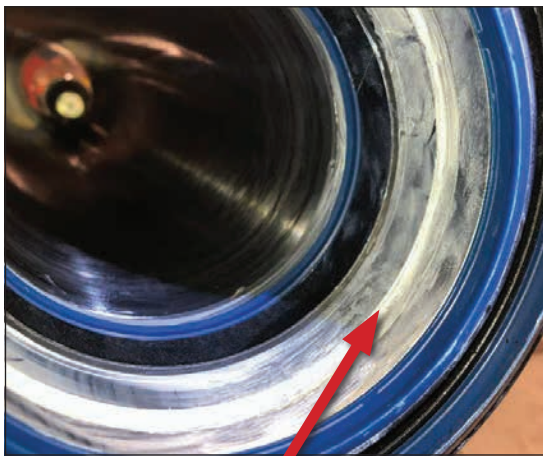


REASSEMBLY

23. Install the wiper.



24. Install the guide rings. The raised ledge end of one of the guide rings will seat right behind the high pressure seal. The raised ledge of the other guide rings will be back to back and fit into a slot in the inside diameter of the stage.



Slot

REASSEMBLY

NOTE: Shown to the right is the typical stack up of wiper, guides, and high pressure seal.

Wiper

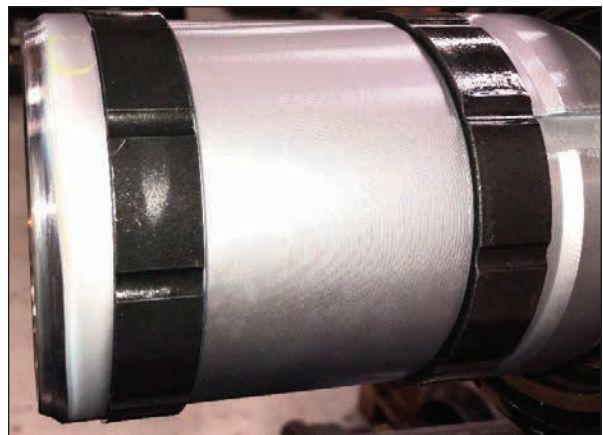
Guides w/
ledge together

Guides w/
ledge down

HP Seal



25. Install the lower guide on the next stage. (which will be installed into the cylinder next). Be sure to examine the stage for any damage or defects prior to installing into the cylinder.



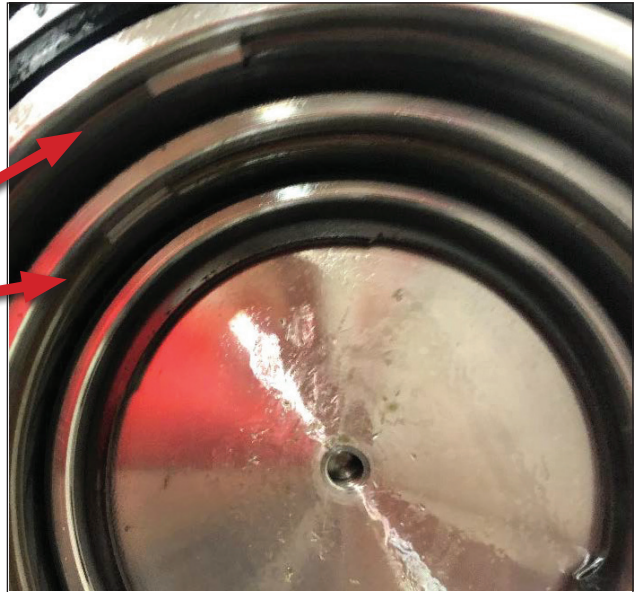
26. Install the next stage into the cylinder. This will require using the stiff elastic rod and a hammer. Be careful not to damage the stages as you install them into the cylinder. NOTE: You may need to center the stage as you install it, otherwise the stop on the bottom of the stage may catch and prevent the stage from sliding into the cylinder.



REASSEMBLY

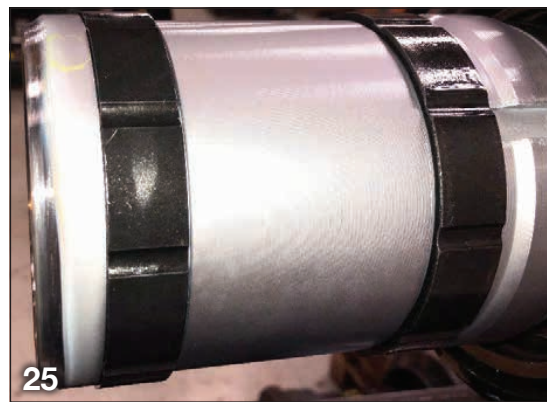
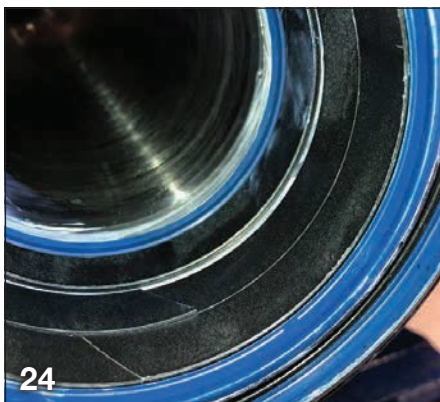
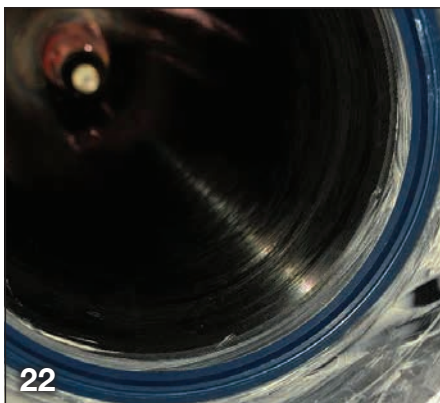
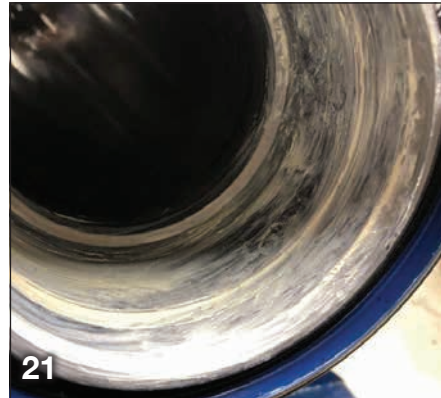
27. Install the snap ring(s) at the bottom of the stage(s) after you drive each stage into the cylinder.

Snap Rings



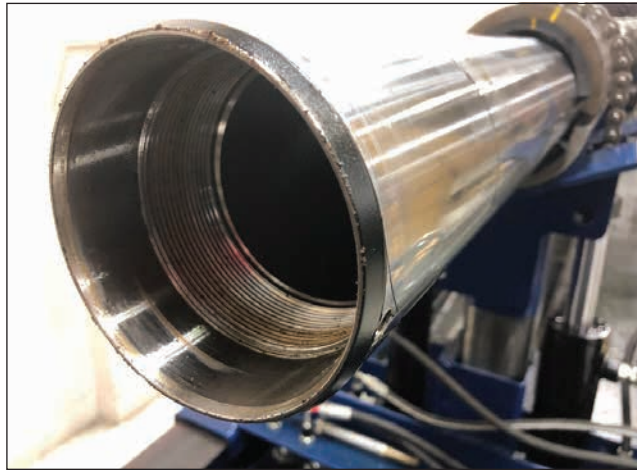
REASSEMBLY

28. Repeat steps 21–27 until all stages have been installed into the cylinder. Make sure that all high pressure seals, guide rings, and wipers have been installed.



REASSEMBLY

29. With all stages now installed into the cylinder, drive the smallest stage into the cylinder far enough that you can secure it and prevent it from rotating.

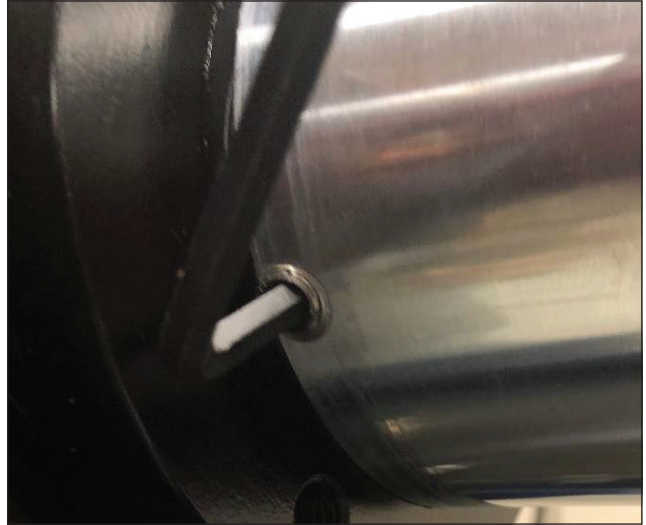


30. Reinstall the top flange.

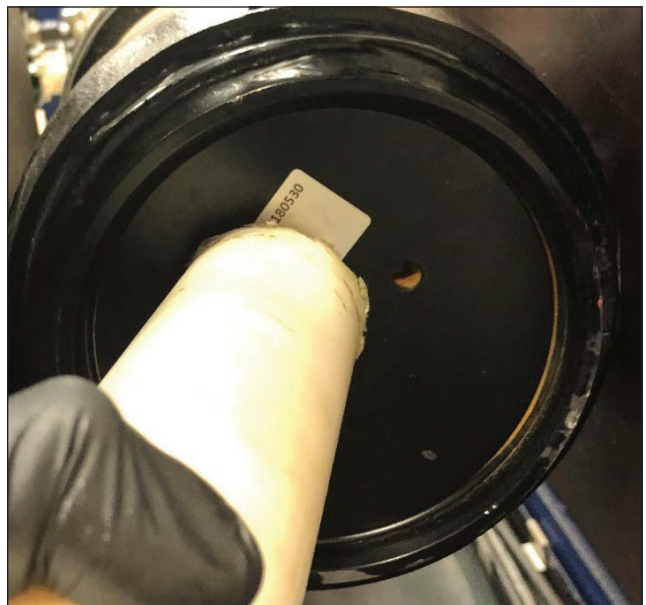
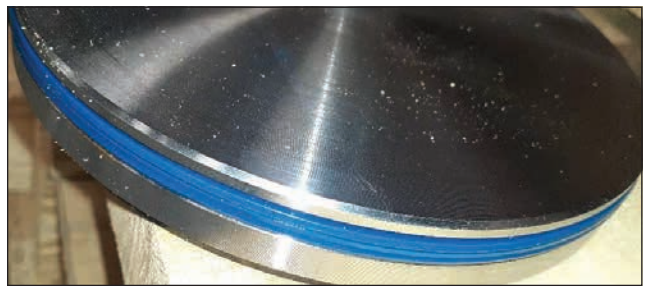


REASSEMBLY

31. Apply a thread adhesive to the set screw and reinstall the set screw. After tightening the flange back into the stage, you may need to drill and tap a new hole for the set screw.

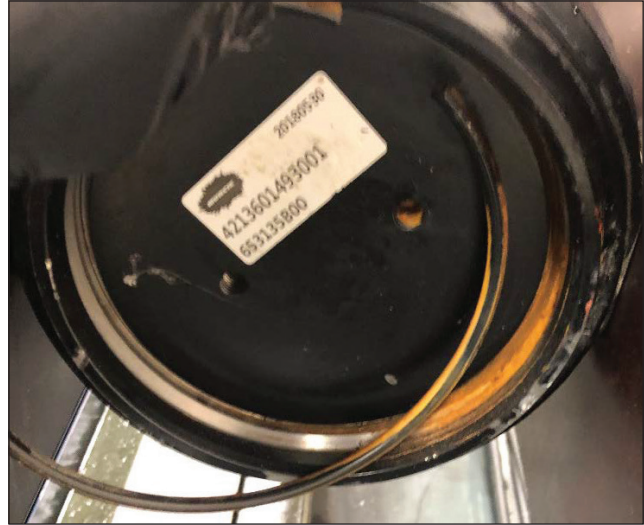


32. Replace the seal on the base plate, and reinstall the base plate into the cylinder. You will need to drive the plate back in using the stiff elastic rod and a hammer.

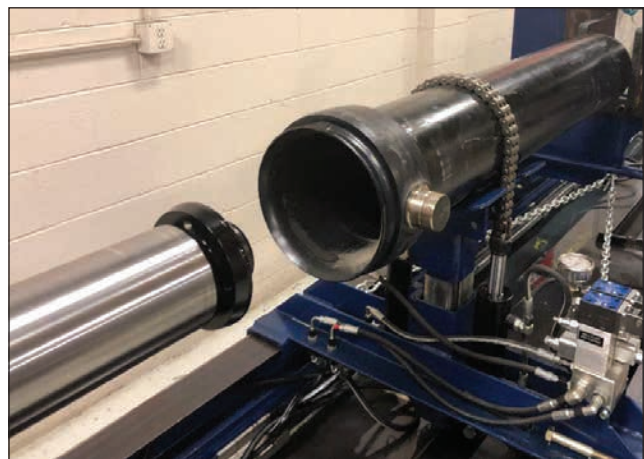


REASSEMBLY

33. Install the snap ring at the bottom of the cylinder to secure the base plate.



34. Guide the cylinder into the outer cover.



REASSEMBLY

35. Install the bolts securing the outer cover to the cylinder assembly. Tighten the bolts to appropriate torque noted in the chart below.

Series	Size	Torque
5.5	M12	110 lb.ft (147 Nm)
6.5 & 7.5	M14	125 lb.ft. (170 Nm)

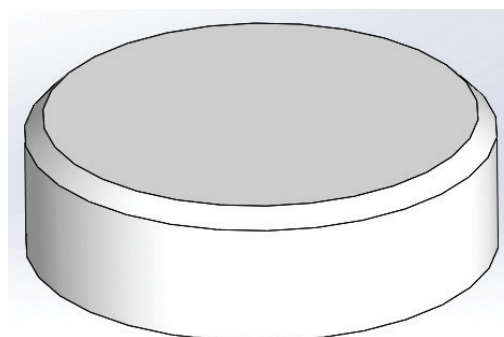
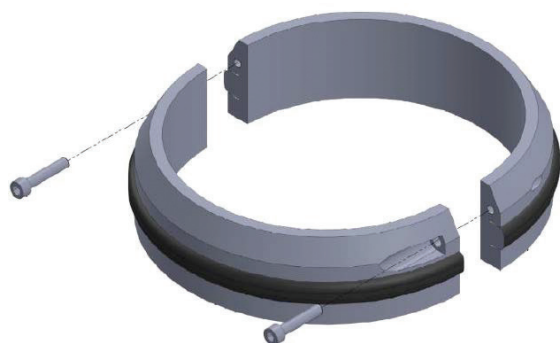


36. Install the top protective cap.



37. If you have the capability to test the cylinder, do so now. Fully cycle the cylinder several times checking for leaks. If a test stand is not available, install into a truck and cycle the cylinder several times. Because this cylinder is of a self bleeding design, it may take 8–10 cycles before all of the air has bled out.

ADDITIONAL INFORMATION



Series	Anti-rattle Buffers	Protective Caps
5.5	55ARB30	TC5530
6.5	65ARB30	TC6530
7.5	75ARB30	TC7530

TROUBLESHOOTING INFORMATION



This symbol indicates a hazardous situation which, if not avoided, could result in death or serious injury.

Condition	Likely Cause	Correction
Cylinder does not extend.	No oil in reservoir.	Fill reservoir with approved fluid.
	Closed shut-off valve.	Open valve.
	Air trapped in pump.	Purge air from pump.
	Pump rotation incorrect.	Replace or reconfigure pump to correct rotation.
	Hoses plumbed incorrectly.	Correct the plumbing.
	PTO not engaged.	See "PTO Troubleshooting"
	Pump worn or damaged.	Repair or replace pump.
	Load is causing system pressure to exceed relief pressure setting.	Check relief setting and adjust accordingly. Do not exceed cylinder maximum pressure. Remove excess load.
	Cylinder diameter too small for the application.	Consult body builder manufacturer to determine the proper cylinder for the application.
	Relief valve improperly set.	Adjust relief valve to manufacturer's specification.
Relief valve stuck open.	Remove, clean, and reset to specification.	

TROUBLESHOOTING INFORMATION CONTINUED

	Condition	Likely Cause	Correction
	Cylinder does not retract or at least one stage does not retract.	Dump angle too great resulting in not enough body weight to collapse cylinder (or cylinder too long).	Remove cylinder, stroke too long.
		Valve and or hoses too small causing excessive pressure differential.	Replace with larger valve and or hoses. Or disengage PTO for low function.
		Cylinder stages bent or bulged due to side load, misalignment, or over pressurization.	Check for misalignment of cylinder hinges or mounting with frame, and the hinges of the dump body and frame. Replace damaged cylinder and verify alignment of mounting and hinge points.
		Cylinder has become bent due to improper dump procedure.	Replace cylinder.
		Valve not shifted properly.	Repair or replace valve.
	Cylinder operates but with a "jerky" motion.	Air trapped in cylinder.	Cycle cylinder 8–10 times. Muncie Power cylinders will self bleed.
	Cylinder does not retract initially when the valve is engaged, but suddenly drops after a few seconds.	Air trapped in cylinder.	Cycle cylinder 8–10 times. Muncie Power cylinders will self bleed.
		Cylinder stages bent or bulged due to side load, misalignment, or over pressurization.	Check for misalignment of cylinder hinges/mounting with frame, and the hinges of the dump body and frame. Replace damaged cylinder and verify alignment of mounting and hinge points.
	An "oil" line substance is dripping from the cylinder.	During construction, white lithium grease is used to lubricate internal components that will not be exposed to oil. As it heats up, it may drain down the side of the cylinder.	Wipe away the grease, over time this will subside. If not, oil may be leaking past the seal, at which point the cylinder will need repaired or replaced.
	Leakage from port(s). DO NOT use Teflon pipe tape on fittings.	Loose or damaged fitting.	Tighten or replace fitting.
	Cylinder too slow while extending.	Pump sized too small for application.	Change pump or PTO for proper application.
		PTO speed too slow for application.	Change pump or PTO for proper application.
		Low engine RPM.	Raise engine RPM.
		Relief valve improperly set.	Adjust relief valve to manufacturer's specification.
		Relief valve stuck open.	Remove, clean, and reset to specification.
	Cylinder too slow while retracting.	Valve and or hoses too small causing excessive pressure differential.	Replace with larger valve and or hoses. Or disengage PTO for lower function.
	Cylinder too fast while extending.	Pump sized too large for application.	Change pump or PTO for proper application.
		PTO speed too fast for application.	Change pump or PTO for proper application.
	Cylinder too fast while retracting.	Material stuck in dump body/trailer.	Make sure all material has emptied from dump body/trailer.
	Material remains stuck in bed.	Dump angle not great enough or steep enough to allow material to fall out of the bed.	Consult body/trailer builder manufacturer to determine the proper cylinder for the application. The stroke may need to be increased.
	Final stage(s) will not extend.	Relief valve improperly set.	Adjust relief valve to manufacturer's specification.
		Cylinder diameter too small for the application.	Consult body builder manufacturer to determine the proper cylinder for the application.
	Excessive noise coming from the cylinder.	Mounting hardware/cylinder out of alignment.	Consult body/trailer builder to make sure mounting hardware is installed correctly.
		Anti-rattle buffer damaged.	Replace anti-rattle buffer (55ARB00, 65ARB00, 75ARB00).
			Check alignment of cylinder.
			Tighten bolts that attach the outer cover to the cylinder (at top of cylinder, under white protective cap).

This symbol indicates a hazardous situation which, if not avoided, could result in death or serious injury.



A Member of the Interpump Group

IN25-06 (Rev. 03-25)

201 East Jackson Street, Muncie, Indiana 47305
800-367-7867 • Fax: 765-284-6991 • info@munciepower.com

Specifications are subject to change without notice. Visit www.munciepower.com
for warranties and literature. All rights reserved. © Muncie Power Products, Inc. (2025)