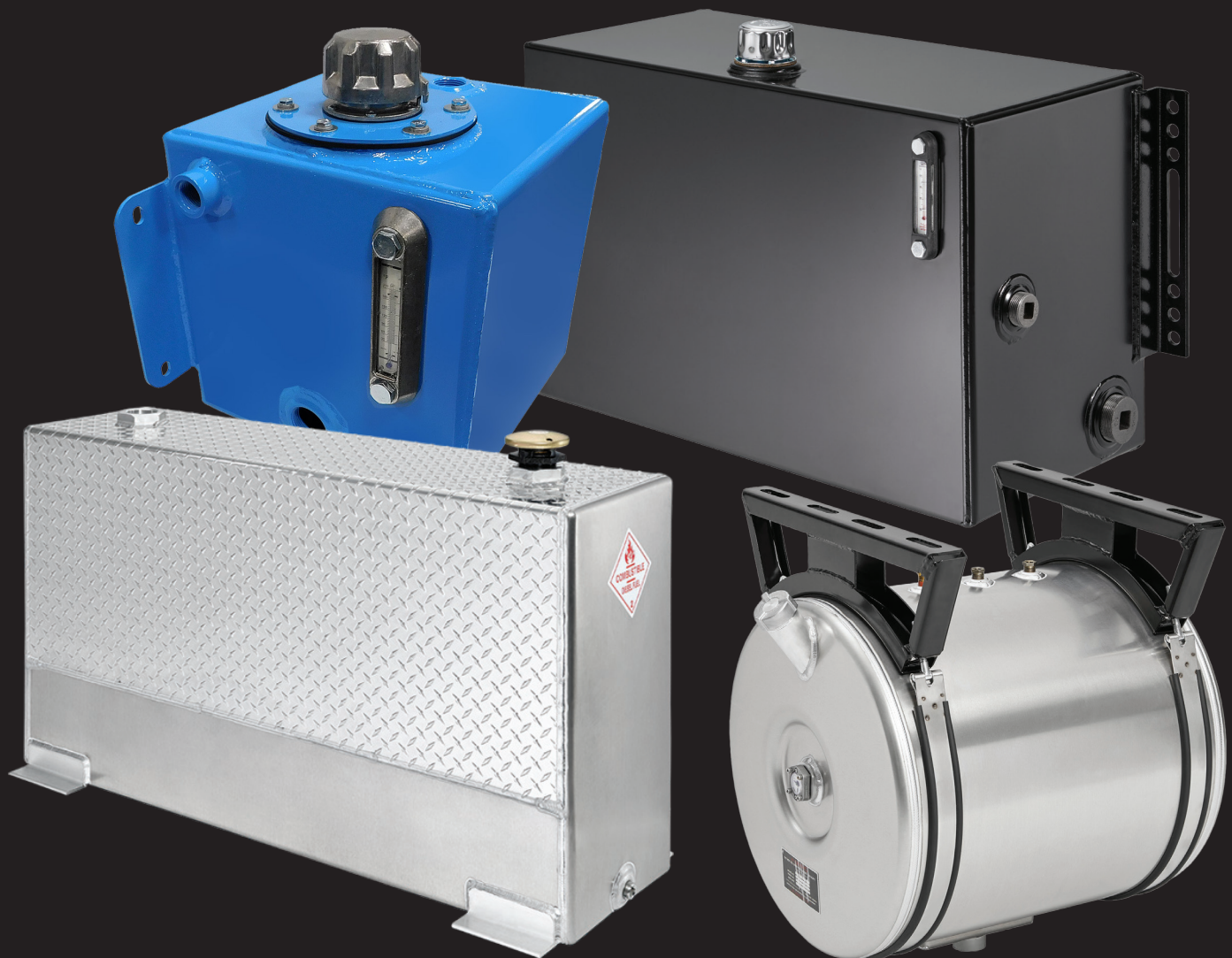




HYDRAULIC | REEFER | TRANSFER | CUSTOM

TANK

PRODUCT OVERVIEW





BY MUNCIE POWER PRODUCTS

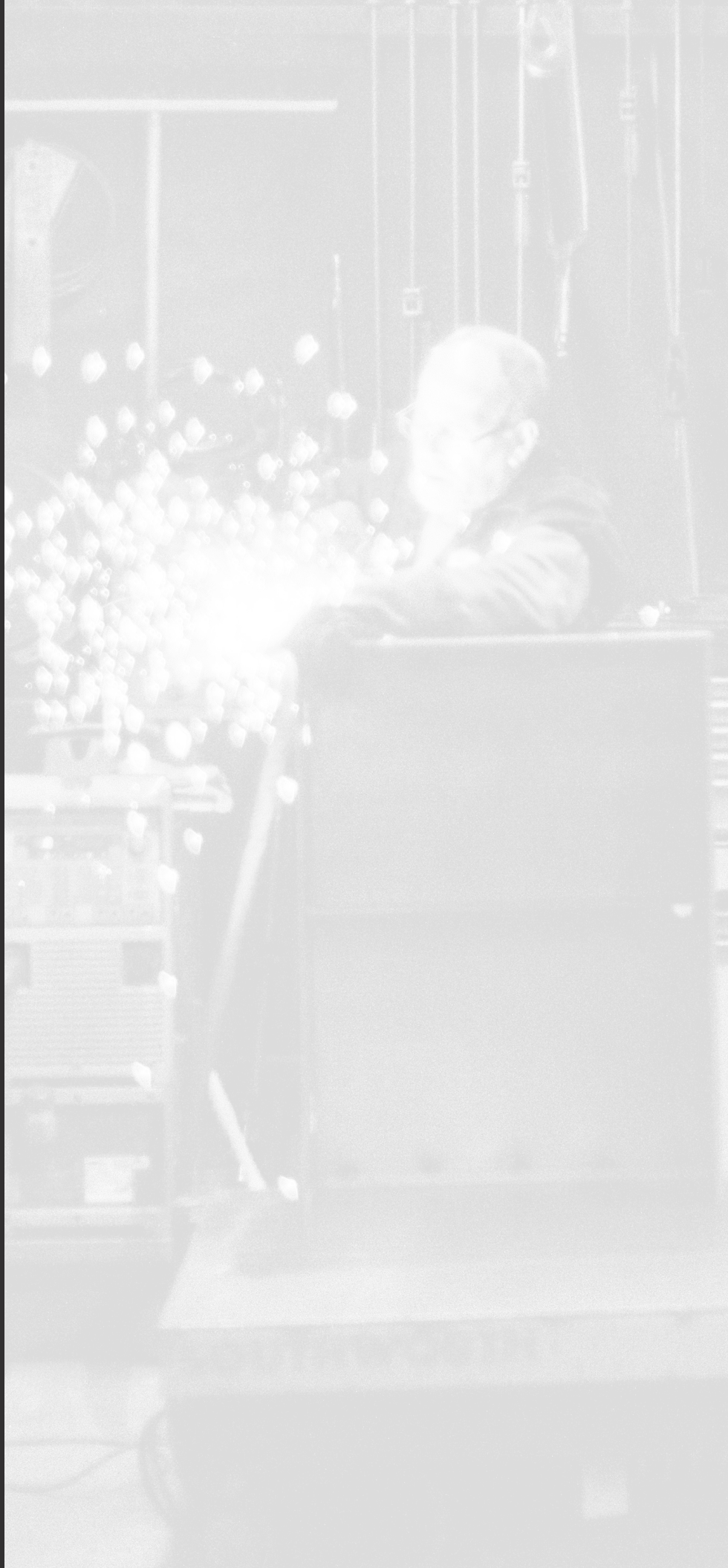
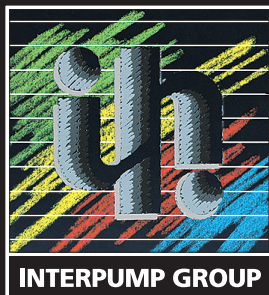
LEADERS IN TANK MANUFACTURING

Muncie Power Products is a premium manufacturer of hydraulic, transfer, and reefer tanks. Our quality in craftsmanship, attention to detail, and customer service allow us to deliver you the best product.

QUALITY GUARANTEED

All of our tanks go through a rigorous testing process to guarantee the highest quality. We make sure every tank has an overall clean appearance, a quality weld, and leak-proof construction.

A MEMBER OF



CUSTOM TANKS

As a leading provider of custom tank solutions, we design and build high-quality tanks engineered to your exact specifications.

We offer a full range of mounting options and materials, including aluminum, stainless steel, and steel. Simply select your mounting style, define your dimensions, and specify assemblies, parts, kits, porting, and vents. Our team will then produce custom-built tanks tailored to your application.



HYDRAULIC TANKS

Our widest selection of tanks, ranging from 7- to 100-gallon capacities, features different mounting styles, such as upright, side mount, and saddle mount.



UPRIGHT TANKS

Materials: Aluminum, Steel, Polyethylene

Sizes (Gallon): 35, 50, 70, 75, 100

Our upright tanks are designed for continuous-duty applications (aluminum and steel) and intermittent-duty, low-heat applications (polyethylene).



SIDE MOUNT TANKS

Materials: Aluminum, Steel, Polyethylene

Sizes (Gallon): 7, 10, 15, 25, 30, 35, 38, 40, 50

This line of side mount tanks includes a variety of sizes for several intermittent- or continuous-duty applications, while providing a strong aesthetic.



SADDLE MOUNT TANKS

Materials: Aluminum, Steel

Sizes (Gallon): 25, 35, 50, 75, 100

Our roll-formed cylindrical tanks with domed ends are ideal for applications where mounting behind the cab is not available or limited. These tanks are ideal for hard-working, continuous-duty applications.

TRANSFER TANKS

Our aluminum supplemental diesel fuel storage tank range from 50- to 120-gallon capacities. All transfer tanks are deck mounted, but come in two different styles: upright and L-Style.



UPRIGHT TANKS

Material: Aluminum
Sizes (Gallon): 50, 70, 72, 90, 102

This tank style is designed for use with all types of truck beds, utility beds, and flatbeds, and it extends above the bed rails.



L-STYLE TANKS

Material: Aluminum
Sizes (Gallon): 75, 88, 120

L-Style tanks are best used on most truck bed styles—excluding step-side—and flat beds. It can be mounted with a toolbox in mind, and it sits below the bed rails.



TRANSFER PARTS AND MOUNTING

Vented diesel caps, magnetic port plugs, and transfer mounting bracket kits are available to be paired with our transfer tanks.



TRANSFER PUMPS AND METERS

American Mobile Power can provide hand pumps, electric pumps with an automatic nozzle, electric pumps with a manual nozzle, and electric digital fuel meters to pair with our transfer tank options.

REEFER TANKS

Our reefer, or refrigeration, tanks are rolled aluminum cylinders with domed ends. They range from 35- to 100-gallon capacities with 22" and 24" diameters.

22" DIAMETER REEFER TANKS

Material: Aluminum
Sizes (Gallon): 35, 50, 75, 100

This size option is ideal for any application requiring a reefer tank.

Our 22" diameter reefer tanks meet all FHWA side-mounted fuel tank requirements. Units are designed to be used with diesel fuel only.

24" DIAMETER REEFER TANKS

Material: Aluminum
Sizes (Gallon): 35, 50, 75, 100

For applications requiring a larger tank, we offer the 24" diameter option.

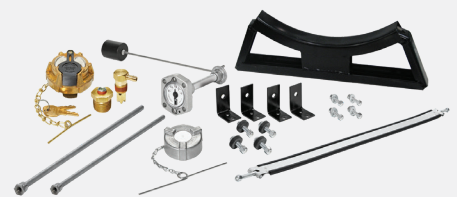
Our 24" diameter reefer tanks meet all FHWA side-mounted fuel tank requirements. Units are designed to be used with diesel fuel only.

REEFER MOUNTING KITS

Heavy-duty mounting kits for both 22" and 24" diameter reefer tanks are available, as well as stainless steel strap assemblies, frame mounting hardware, and reefer brackets.

REEFER PARTS

Anti-spill vents, bottom check valve drains and plugs, fuel float gauges, non-vented cap, and pick-up/return tubes are available for 22" and 24" diameter reefer tanks.





A Member of the Interpump Group

619 EAST JEFFERSON STREET | FAIRMOUNT, INDIANA 46928
800-634-8265 | WWW.AMERICANMOBILEPOWER.COM