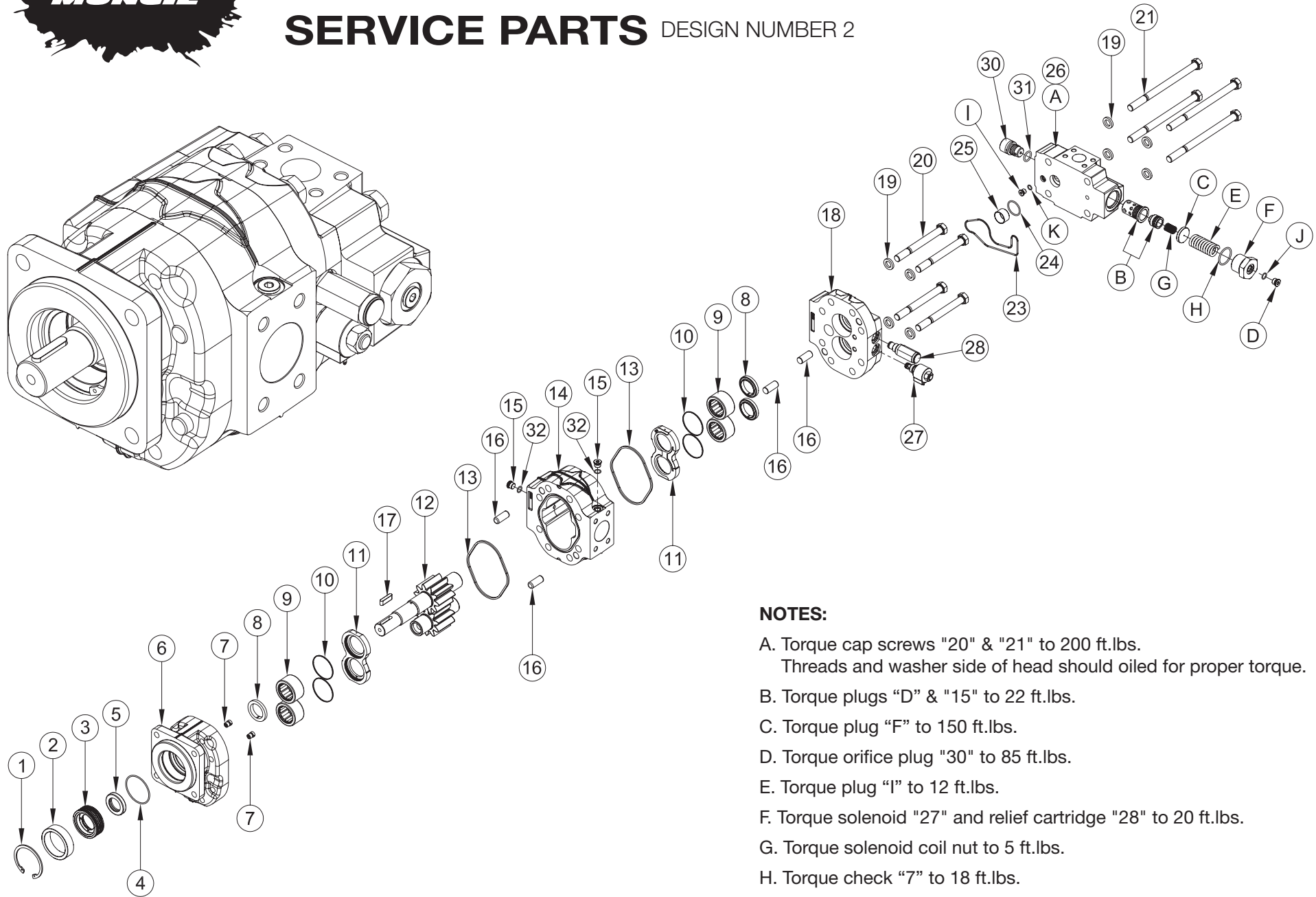
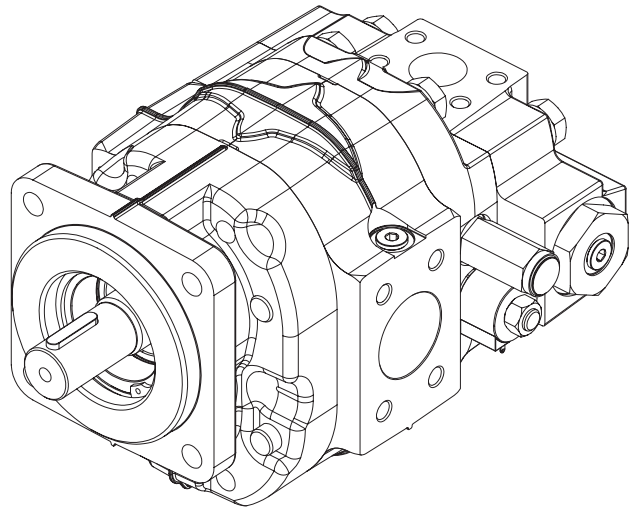




MLS SERIES M

SERVICE PARTS DESIGN NUMBER 2



NOTES:

- A. Torque cap screws "20" & "21" to 200 ft.lbs.
Threads and washer side of head should be oiled for proper torque.
- B. Torque plugs "D" & "15" to 22 ft.lbs.
- C. Torque plug "F" to 150 ft.lbs.
- D. Torque orifice plug "30" to 85 ft.lbs.
- E. Torque plug "I" to 12 ft.lbs.
- F. Torque solenoid "27" and relief cartridge "28" to 20 ft.lbs.
- G. Torque solenoid coil nut to 5 ft.lbs.
- H. Torque check "7" to 18 ft.lbs.

MLS M SERIES SERVICE PARTS

ITEM	DESCRIPTION	QTY.	MUNCIE PART NO.	ITEM	DESCRIPTION	QTY.	MUNCIE PART NO.
1	O.B. Snap Ring.....	1	PM1-1001	26	Valve Body Assembly	1	PM1-1040-LPV
2	Spacer.....	1	PM1-1002-D	A	Valve Housing.....	1	PM1-1040-LPV001
3	Seal Retainer.....	1	PM1-1003M	B	Poppet & Metering Spool.....	1	PM1-1040-LPV003A
4	Retainer O-Ring.....	2	PM1-1004	C	Washer (0.031 Orifice).....	1	PM1-1040-LPV004
5	Shaft Seal.....	1	PM1-1005	D	Plug -6 SAE.....	1	HHBP-6Z
6	Front Cover			E	Metering Spring.....	1	PM1-1040-LPV006
	SAE C 4-Bolt.....	1	PM1-1107-CLXXX	F	Spool End Cap.....	1	PM1-1040-LPV007
	SAE C 2-Bolt.....	1	PM1-1107-LLXXX	G	Poppet Spring.....	1	PM1-1040-LPV008
7	Check Valve.....	2	PS1-1010	H	O-Ring, Cap Plug.....	1	BOR-20
8	Ring Seal.....	3	PM1-1008-011	I	Plug -4 SAE (w/0.078 Dia.).....	1	PM1-1040-LPV005B
9	Bearing.....	4	PM1-1013	J	O-Ring, 0.47 x 0.079.....	1	BOR-6
10	Pressure Balance Seal.....	4	PM1-1009M	K	O-Ring, 0.36 x 0.07.....	1	BOR-4
11	Wear Plate.....	2	PM1-1014M	27	Solenoid Valve.....	1	35T37427
12	Gear Set			28	Relief Valve Fixed.....	1	35T37435
	1 1/4" Round Shaft 27 GPM.....	1	PM1-1016-K07-27-2		Relief Valve Blanking Plug.....	1	25T37436
	1 1/4" Round Shaft 31 GPM.....	1	PM1-1016-K07-31-2	30	Orifice Plug		
	1 1/4" Round Shaft 35 GPM.....	1	PM1-1016-K07-35-2		22 GPM Through Hole.....	1	25T37469-000
	1 1/4" Round Shaft 40 GPM.....	1	PM1-1016-K07-40-2		25 GPM 0.0935 inches.....	1	25T37469-093
	1 1/4" Round Shaft 44 GPM.....	1	PM1-1016-K07-44-2		30 GPM 0.1562 inches.....	1	25T37469-156
	1 1/4" 14T Splined 27 GPM.....	1	PM1-1016-S05-27-2		35 GPM 0.2031 inches.....	1	25T37469-203
	1 1/4" 14T Splined 31 GPM.....	1	PM1-1016-S05-31-2		40 GPM 0.2188 inches.....	1	25T37469-218
	1 1/4" 14T Splined 35 GPM.....	1	PM1-1016-S05-35-2		45 GPM 0.2500 inches.....	1	25T37469-250
	1 1/4" 14T Splined 40 GPM.....	1	PM1-1016-S05-40-2		50 GPM 0.2812 inches.....	1	25T37469-281
13	Body Seal.....	2	PM1-1015		55 GPM 0.3120 inches.....	1	25T37469-312
14	Body				60 GPM 0.3438 inches.....	1	25T37469-343
	27 GPM.....	1	PM1-1125-27-COU		65 GPM 0.3750 inches.....	1	25T37469-375
	31 GPM.....	1	PM1-1125-31-CPD		70 GPM 0.3906 inches.....	1	25T37469-390
	35 GPM.....	1	PM1-1125-35-CPD		75 GPM 0.4130 inches.....	1	25T37469-413
	40 GPM.....	1	PM1-1125-40-CPD	31	Orifice Plug O-Ring.....	1	12T37473
	44 GPM.....	1	PM1-1125-44-CPD	32	O-Ring.....	1	BOR-6
15	Test Port Plug -6 SAE.....	2	HHBP-6Z	NS	Seal & O-Ring Kit.....	1	GSK-PM1-LPV
16	Dowel Pin.....	4	PM1-1024		KIT "GSK-PM1-LPV" CONTAINS THE FOLLOWING		
17	Shaft Key.....	1	PM1-1017		Retainer O-Ring.....	1	PM1-1004
18	Rear Cover.....	1	PM1-1126-LPV		Pressure Balance Seal.....	4	PM1-1009M
19	Washer.....	8	PE1-1230		Body Seal.....	3	PM1-1015
20	Cap Screw Short				Shaft Seal.....	1	PM1-1005
	27 GPM, 5/8" -11 UNC x 5/4.....	4	PL1-1028-14		O-Ring.....	1	PM1-1032-235
	31 GPM, 5/8" -11 UNC x 5/2.....	4	PL1-1028-16		O-Ring.....	1	PM1-1032-618
	35 GPM, 5/8" -11 UNC x 5/4.....	4	PL1-1028-19		KIT "RBK-PM1-LPV" CONTAINS THE FOLLOWING		
	40 GPM, 5/8" -11 UNC x 6.....	4	PL1-1028-23		Wear Plate.....	2	PM1-1014M
	44 GPM, 5/8" -11 UNC x 6 1/2.....	4	PL1-1028-25		Retainer O-Ring.....	1	PM1-1004
21	Cap Screw Long				Ring Seal.....	3	PM1-1008-011
	27 GPM, 5/8" -11 UNC x 8.....	4	PM1-1028-700		Pressure Balance Seal.....	2	PM1-1009M
	31\35 GPM, 5/8" -11 UNC x 8 1/2.....	4	PM1-1028-706		Body Seal.....	3	PM1-1015
	40\44 GPM, 5/8" -11 UNC x 9.....	4	PM1-1028-351		Shaft Seal.....	1	PM1-1005
23	O-Ring Rear Cover Channel.....	1	PM1-1032-235		O-Ring.....	1	PM1-1032-235
24	O-Ring Seal Hollow Dowel.....	1	PM1-1032-618		O-Ring.....	1	PM1-1032-618
25	Hollow Dowel Pin.....	1	PM1-1024-515		KIT "PM1-1013K" CONTAINS THE FOLLOWING		
					Bearing.....	4	PM1-1013



A Member of the Interpump Group

SP09-02 (Rev. 01-22)

201 East Jackson Street, Muncie, Indiana 47305
800-367-7867 • Fax: 765-284-6991 • info@munciepower.com

Specifications are subject to change without notice. Visit www.munciepower.com for warranties and literature. All rights reserved. © Muncie Power Products, Inc. (2009)