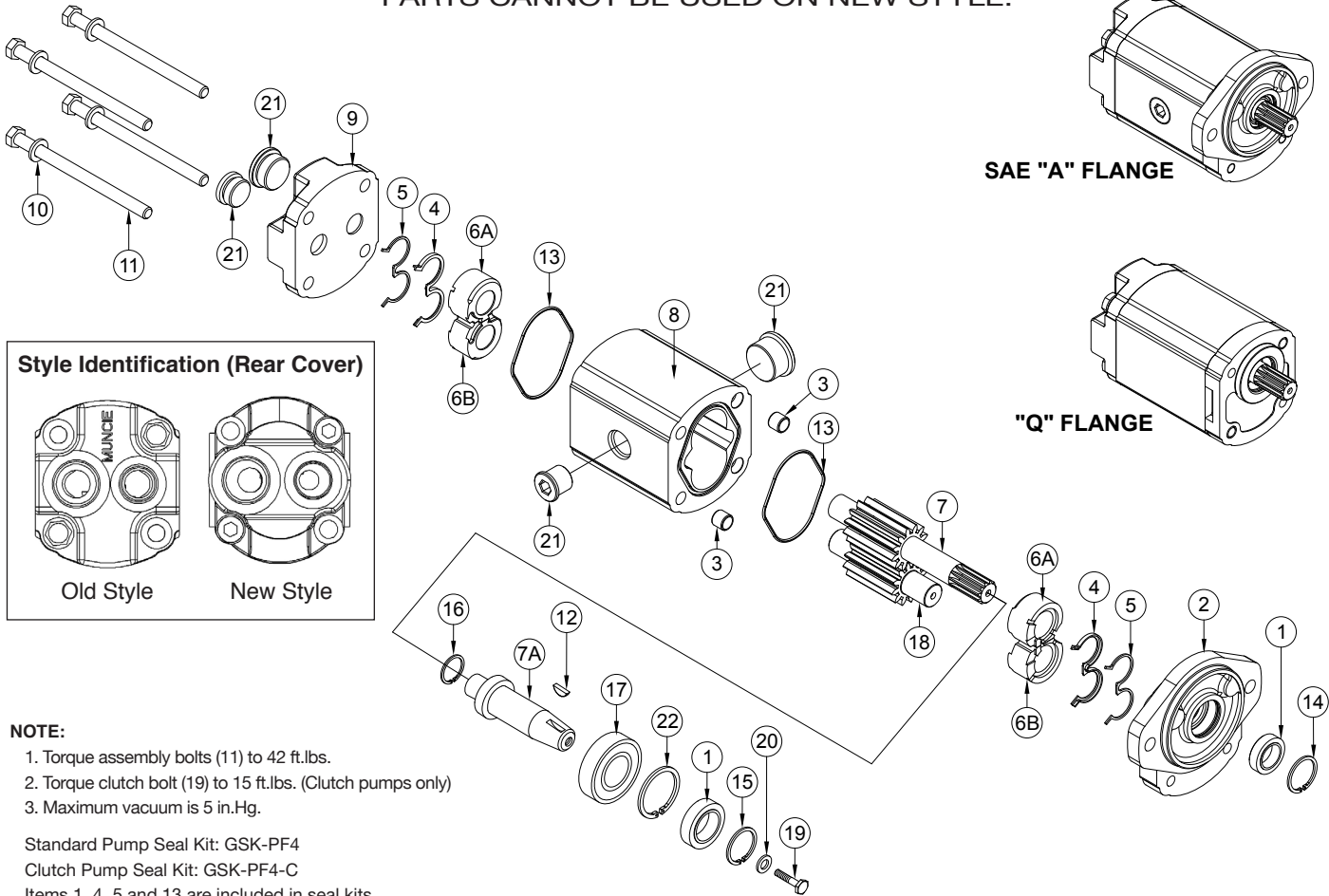




PF4 SERIES PUMP SERVICE PARTS

OLD STYLE ONLY!

PARTS CANNOT BE USED ON NEW STYLE.



NOTE:

1. Torque assembly bolts (11) to 42 ft.lbs.
2. Torque clutch bolt (19) to 15 ft.lbs. (Clutch pumps only)
3. Maximum vacuum is 5 in.Hg.

Standard Pump Seal Kit: GSK-PF4

Clutch Pump Seal Kit: GSK-PF4-C

Items 1, 4, 5 and 13 are included in seal kits

PF4 SERIES PUMP SERVICE PARTS

ITEM	DESCRIPTION	QTY.	MUNCIE PART NO.	ITEM	DESCRIPTION	QTY.	MUNCIE PART NO.
1	Shaft Seal	1	PF4-1005	6B	Bushing Right Hand		
	Shaft Seal (Clutch Pump)	1	PF4-1005-C		1.07-3.68GPM Short Block	2	PF4-1013-RS
2	Front Cover				4.24-8.70GPM Long Block	3	PF4-1013-RL
	SAE "A" Flange	1	PF4-1007-ASXXX	7	Drive Gear		
	"Q" Flange	1	PF4-1007-QSXXX		5/8-9T Spline Shaft		
	SAE "A" Clutch Pump Flange	1	PF4-1007-ASXXXC		4.24GPM	1	PF4-1016-S08-424
3	Hollow Dowel	2	PF4-1024		5.02GPM	1	PF4-1016-S08-502
4	Balance Seal (Rubber)	2	PF4-1008		5/8 Round Shaft		
5	Backup Seal (Plastic)	2	PF4-1009		5.02GPM	1	PF4-1016-K25-502
6A	Bushing Left Hand				3/4-11T Spline Shaft		
	1.07-3.68GPM Short Block	2	PF4-1013-LS		1.07GPM	1	PF4-1016-S16-107
	4.24-8.70GPM Long Block	3	PF4-1013-LL		1.60GPM	1	PF4-1016-S16-160

PARTS LIST CONTINUED ON BACK



A Member of the Interpump Group

SP10-11 (Rev. 08-18)

201 East Jackson Street • Muncie, Indiana 47305
 800-367-7867 • Fax 765-284-6991 • info@munciepower.com • www.munciepower.com

Specifications are subject to change without notice. Visit www.munciepower.com for warranties and literature. All rights reserved. © Muncie Power Products, Inc. (2010)

PF4 SERIES PUMP SERVICE PARTS

ITEM	DESCRIPTION	QTY.	MUNCIE PART NO.	ITEM	DESCRIPTION	QTY.	MUNCIE PART NO.
	2.12GPM	1	PF4-1016-S16-212		2.12GPM, 4.25in.	2	19M38425
	2.64GPM	1	PF4-1016-S16-264		2.64GPM, 4.50in.	2	19M38450
	2.90GPM	1	PF4-1016-S16-290		2.90GPM, 4.50in.	2	19M38450
	3.68GPM	1	PF4-1016-S16-368		3.68GPM, 4.75in.	2	19M38475
	4.24GPM	1	PF4-1016-S16-424		4.24GPM, 5.25in.	2	19M38525
	5.02GPM	1	PF4-1016-S16-502		5.02GPM, 5.50in.	2	19M38550
	6.06GPM	1	PF4-1016-S16-606		6.06GPM, 5.75in.	2	19M38575
	7.14GPM	1	PF4-1016-S16-714		7.14GPM, 6.00in.	2	19M38600
	8.18GPM	1	PF4-1016-S16-818		8.18GPM, 6.00in.	2	19M38600
	8.70GPM	1	PF4-1016-S16-870		8.70GPM, 6.25in.	2	19M38625
	Clutch Pump (2-piece style)				Clutch Pump (Assembly Bolt)		
	2.64GPM	1	PF4-1016-SPL-264		2.64GPM, 90mm.....	4	PF4-1028-290
	3.15GPM	1	PF4-1016-SPL-315		3.15GPM, 94mm.....	4	PF4-1028-315
	3.68GPM	1	PF4-1016-SPL-368		3.68GPM, 96mm.....	4	PF4-1028-368
	4.44GPM	1	PF4-1016-SPL-444		4.44GPM, 112mm.....	4	PF4-1028-444
	5.15GPM	1	PF4-1016-SPL-515		5.15GPM, 116mm.....	4	PF4-1028-515
	5.80GPM	1	PF4-1016-SPL-580		5.80GPM, 120mm.....	4	PF4-1028-606
	7.53GPM	1	PF4-1016-SPL-753		7.53GPM, 130mm.....	4	PF4-1028-753
7A	Input Shaft (2-piece style)			12	Key, 0.187" x 1.6" (3/4" Rnd.)	1	PF4-1017
	3/4 Rnd.	1	PF4-1016-K03-000		Woodruff Key (Clutch Pump & 3/8 Rnd.)	1	PH1-1017-W
	Clutch Pump	1	PF4-1016-T28-000	13	Body Seal	2	PF4-1012
8	Body			14	Snap Ring (Shaft Seal)	1	PF4-1003
	-16SAE x -10SAE			15	Snap Ring (Clutch Pump Seal)	2	PF4-1004
	1.60GPM	1	PF4-1025-160-SGG	16	Snap Ring (Clutch Pump Shaft)	1	PF4-1035
	2.12GPM	1	PF4-1025-212-SGG	17	Outboard Bearing (Clutch Pump)	1	PF4-1002
	2.64GPM	1	PF4-1025-264-SGG	18	Driven Gear		
	3.68GPM	1	PF4-1025-368-SGG		Standard Pump		
	4.24GPM	1	PF4-1025-424-SGG		1.07GPM	1	PF4-1023-107
	5.02GPM	1	PF4-1025-502-SGG		1.60GPM	1	PF4-1023-160
	6.06GPM	1	PF4-1025-606-SGG		2.12GPM	1	PF4-1023-212
	7.14GPM	1	PF4-1025-714-SGG		2.64GPM	1	PF4-1023-264
	8.18GPM	1	PF4-1025-818-SGG		2.90GPM	1	PF4-1023-290
	8.70GPM	1	PF4-1025-870-SGG		3.68GPM	1	PF4-1023-368
	No Ports				4.24GPM	1	PF4-1023-424
	1.07GPM	1	PF4-1025-107-XX		5.02GPM	1	PF4-1023-502
	1.60GPM	1	PF4-1025-160-XX		6.06GPM	1	PF4-1023-606
	2.12GPM	1	PF4-1025-212-XX		7.14GPM	1	PF4-1023-714
	2.64GPM	1	PF4-1025-264-XX		8.18GPM	1	PF4-1023-818
	2.90GPM	1	PF4-1025-290-XX		8.70GPM	1	PF4-1025-870
	3.68GPM	1	PF4-1025-368-XX		Clutch Pump		
	4.24GPM	1	PF4-1025-424-XX		2.64GPM	1	PF4-1023-264
	5.02GPM	1	PF4-1025-502-XX		3.15GPM	1	PF4-1023-315
	6.06GPM	1	PF4-1025-606-XX		3.68GPM	1	PF4-1023-368
	7.14GPM	1	PF4-1025-714-XX		4.44GPM	1	PF4-1023-444
	8.18GPM	1	PF4-1025-818-XX		5.15GPM	1	PF4-1023-515
	8.70GPM	1	PF4-1025-870-XX		5.80GPM	1	PF4-1023-580
	Clutch Pump				7.53GPM	1	PF4-1023-753
	2.64GPM	1	PF4-1025-264-SGG	19**	Clutch Bolt	1	19T38756
	3.15GPM	1	PF4-1025-315-SGG	20	Clutch Washer	1	21MZ3487
	3.68GPM	1	PF4-1025-368-SGG	21	Port Plug		
	4.44GPM	1	PF4-1025-444-SGG		-10SAE.....	1	HHBP-10Z
	5.15GPM	1	PF4-1025-515-SGG		-12SAE.....	1	HHBP-12Z
	5.80GPM	1	PF4-1025-580-SGG		-16SAE.....	1	HHBP-16Z
	7.53GPM	1	PF4-1025-753-SGG	22	Snap Ring (Outboard Bearing)	1	PF4-1035OB
9	Rear Cover			N.S	O-Ring		
	-12SAE x -10SAE.....	1	PF4-1026-SFW		0.76 x 0.10.....	1	BOR-10
	No Ports 0.71in Thick	1	PF4-1026-XXA		0.92 x 0.12.....	1	BOR-12
10	Washer	2 or 4	PF4-1029		1.18 x 0.12.....	1	BOR-16
11*	Fasteners			Kits			
	Assembly Bolt				Seal & O-Ring Kit - Standard Pump		GSK-PF4
	1.07GPM, 80mm.....	4 or 2	PF4-1028-107		Shaft Seal	1	PF4-1005
	1.60GPM, 82mm.....	4 or 2	PF4-1028-160		Balance Seal (Rubber)	2	PF4-1008
	2.12GPM, 86mm.....	4 or 2	PF4-1028-212		Backup Seal (Plastic)	2	PF4-1009
	2.64GPM, 88mm.....	4 or 2	PF4-1028-264		Body Seal	2	PF4-1012
	2.90GPM, 90mm.....	4 or 2	PF4-1028-290		Seal & O-Ring Kit - Clutch Pump		GSK-PF4-C
	3.68GPM, 96mm.....	4 or 2	PF4-1028-368		Shaft Seal (Clutch Pump)	1	PF4-1005-C
	4.24GPM, 108mm.....	4 or 2	PF4-1028-424		Balance Seal (Rubber)	2	PF4-1008
	5.02GPM, 114mm.....	4 or 2	PF4-1028-502		Backup Seal (Plastic)	2	PF4-1009
	6.06GPM, 120mm.....	4 or 2	PF4-1028-606		Body Seal.....	2	PF4-1012
	7.14GPM, 128mm.....	4 or 2	PF4-1028-714		Rebuild Kit		Not Available
	8.18GPM, 135mm.....	4 or 2	PF4-1028-818				
	8.70GPM, 136mm.....	4 or 2	PF4-1028-870				
	Through Bolt (Q Flange)						
	1.07GPM, 4.00in.	2	19M38400				
	1.60GPM, 4.25in.	2	19M38425				

* Torque to 42 ft.lbs.

** Torque to 15 ft.lbs.