

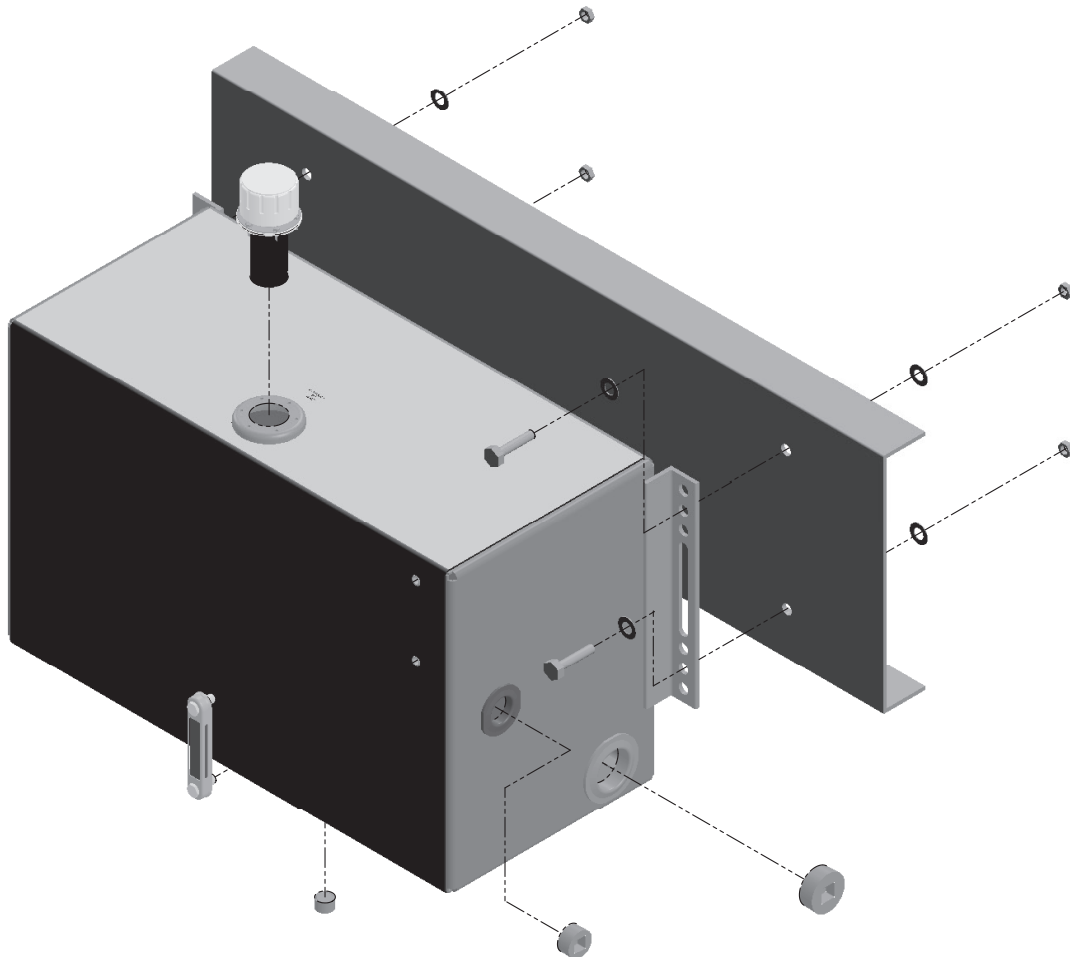


# 7/10/15/25/35/40 GALLON STEEL BOX (SIDE MOUNT TANKS)

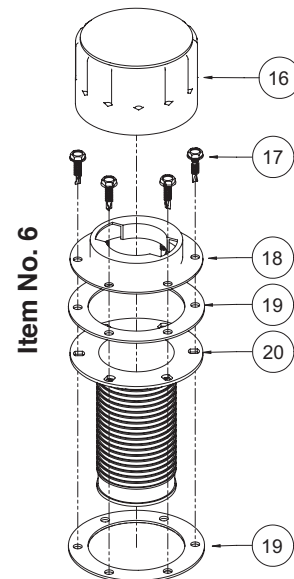
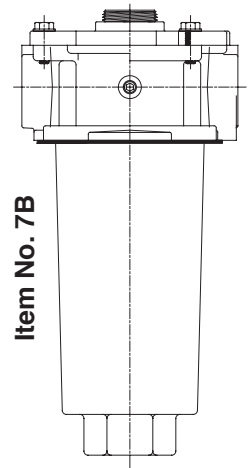
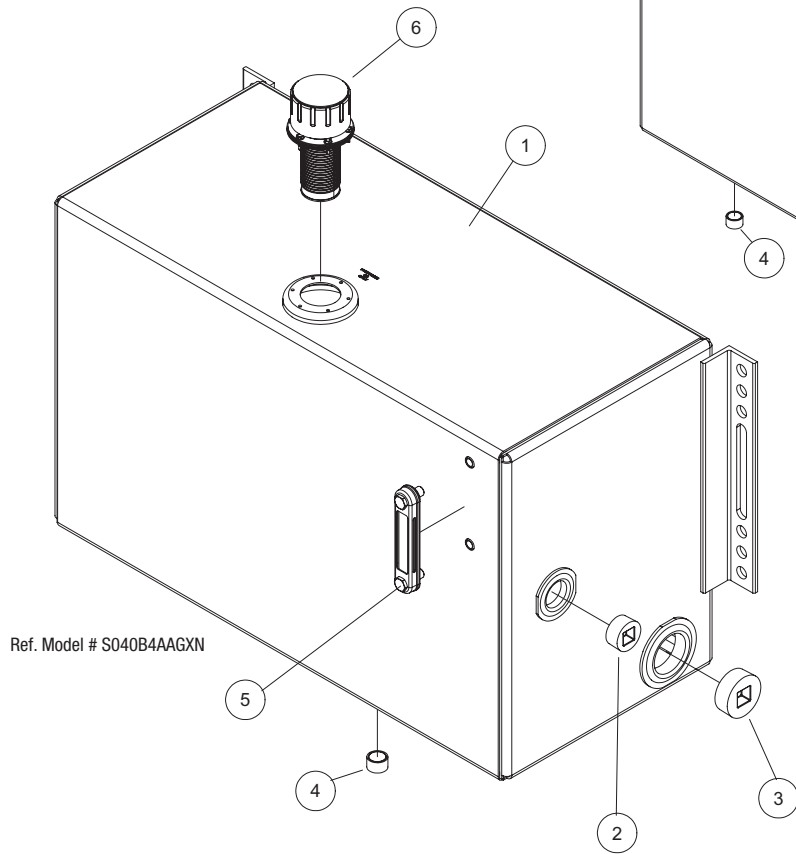
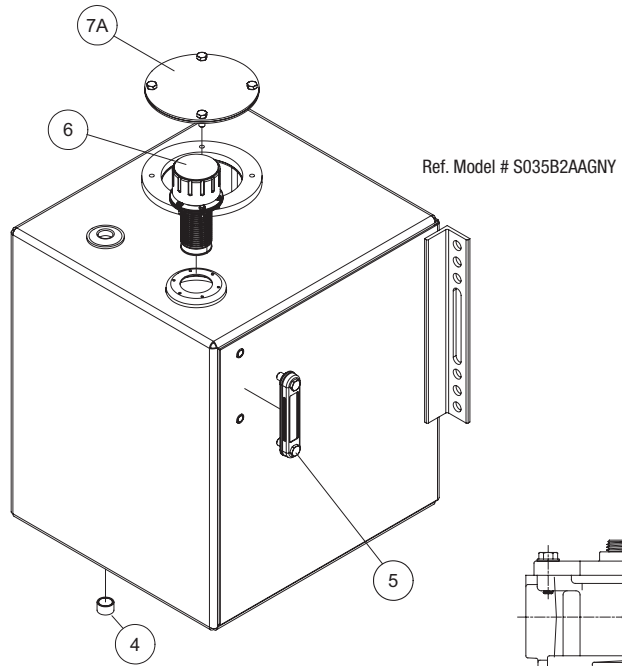
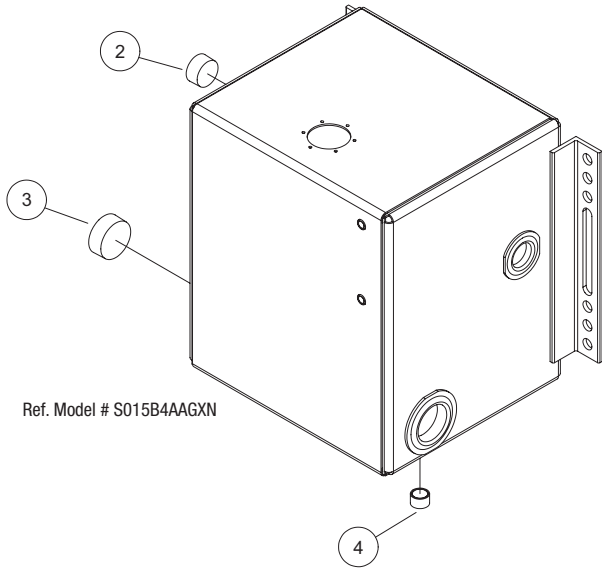
---

INSTALLATION INSTRUCTIONS AND SERVICE PARTS

---



# Service Parts Callout-3 Tank Options Shown



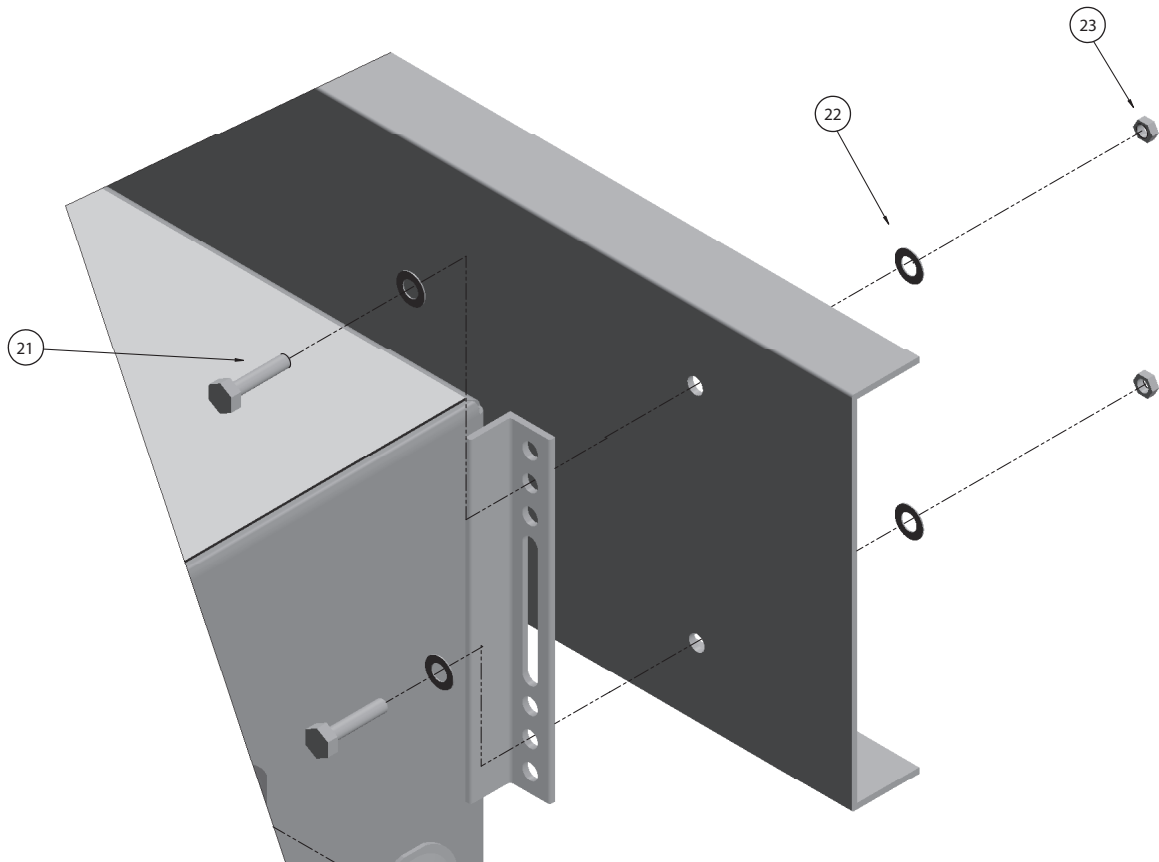
# Service Parts List/Installation Information

ITEM#	DESCRIPTION	QTY	PART#
1	Tank Body	1	N/A
2	1 1/4" NPT Pipe Plug (15, 25 & 40 Gal.)	1	HHPP-20Z
	1" NPT Pipe Plug (7 & 10 Gal. Only)	1	HHPP-16Z
3	2" NPT Pipe Plug (15, 25 & 40 Gal. Only)	1	HHPP-32Z
	1 1/4" NPT Pipe Plug (7 & 10 Gal.)	1	HHPP-20Z
4	Magnetic Plug	1	55T36629
5	Sight/Temperature Gauge	1	31T36377
6	Breather Cap Assembly	1	BC50FSGK-A
7A	Steel Cover Plate <sup>1</sup>	1	16T369611
7B	Filter Assembly <sup>1</sup>	1	TRLF-501
7C	Standard Return Port <sup>1</sup> (Not Shown)	1	B1559
7D	Return Port with Accessory Ports <sup>1</sup> (Not Shown)	1	B1559A
N.S.	3/4" Pipe Plug <sup>1</sup>	1	HHP-12Z
	Vent Breather <sup>1</sup>	1	55T36394
	Bushing for Sensors <sup>1</sup>	1	43T36964

ITEM#	DESCRIPTION	QTY	PART#
N.S.	Diffuser <sup>2</sup>	1	B1560
	Optional Diffuser w/ Defl. Sheild <sup>2</sup>	1	B1560A
N.S.	Reducer Bushing	1	8020591
N.S.	"Top" Flange Standard Gasket (VELAMOID)	1	13T36659
N.S.	"Top" Flange Gasket (BUNA-N, for Pressure)	1	B1540
N.S.	Return Port / Filter Mntg Bolts	4	19M10002
N.S.	Filter Replacement Element	1	TRE-501
N.S.	Return Filter Gauge	1	FG-4
N.S.	O-Rings for Sight Gauge	2	13M43055
16	Breather Cap	1	BC-50
17	10-32 Screws w/ O-ring	6	19T36674
18	Low Neck Breather Flange	1	56T36398
19	Breather Flange Gasket	2	13T36399
20	Strainer Basket	1	56T36400

1. Only available on the 35 gallon tanks. Reference model #'s S035B2AAGFN & S035B2AAGN\*.

2. Diffuser options will require the use of item number 7C or 7D.



ITEM#	INSTALLATION COMPONENTS**	QTY	PART#
21	1/2" Bolt**	4	N/A
22	1/2" Flat Washer**	8	N/A
23	1/2" Hex Nut**	4	N/A

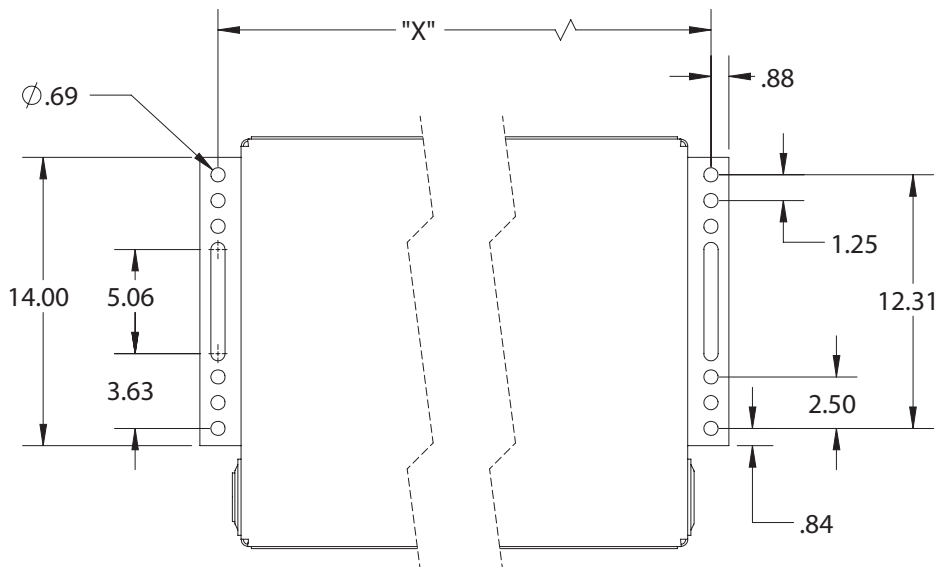
\*\*Installer to provide locknuts, washers, and 1/2" Grade 5 or better capscrews to attach tank to frame.

## Installation Instructions:

1. Find appropriate area on truck frame rail for desired mounting.
2. Using the bracket dimensions mark locations for holes on the frame. (With the 7 Gallon Tank, you will need to drill appropriate hole locations in the pre-attached mounting brackets on the tank.)
3. Drill holes in frame for the 1/2" bolts.
4. Using the 1/2" bolts, nuts and washers, mount the tank/ brackets to the frame.
5. Install the magnetic drain plug, sensors (if purchased), and vent breather (if purchased). A thread sealant is recommended, however DO NOT USE Teflon® tape.

**Note:** Use one of the “larger” port(s) for the pump supply and one of the “smaller” port(s) for the return.

**Reference Drawing for Mounting Dimensions**



TANK SIZE	DIMENSION "X"
10	14.25 Inches
15	17.75 Inches
25	22.25 Inches
35	20.50 Inches
40	34.25 Inches



SP13-02 (Rev. 02-14) Printed in the U.S.A  
© Muncie Power Products, Inc. 2013

**Muncie Power Products, Inc.** Member of the Interpump Hydraulics Group  
General Offices and Distribution Center • P.O. Box 548 • Muncie, IN 47308-0548  
(765) 284-7721 • FAX (765) 284-6991 • E-mail info@munciepower.com  
Web site <http://www.munciepower.com>

Drive Products, Exclusive Agents for Canada, ISO Certified by an Accredited Registrar