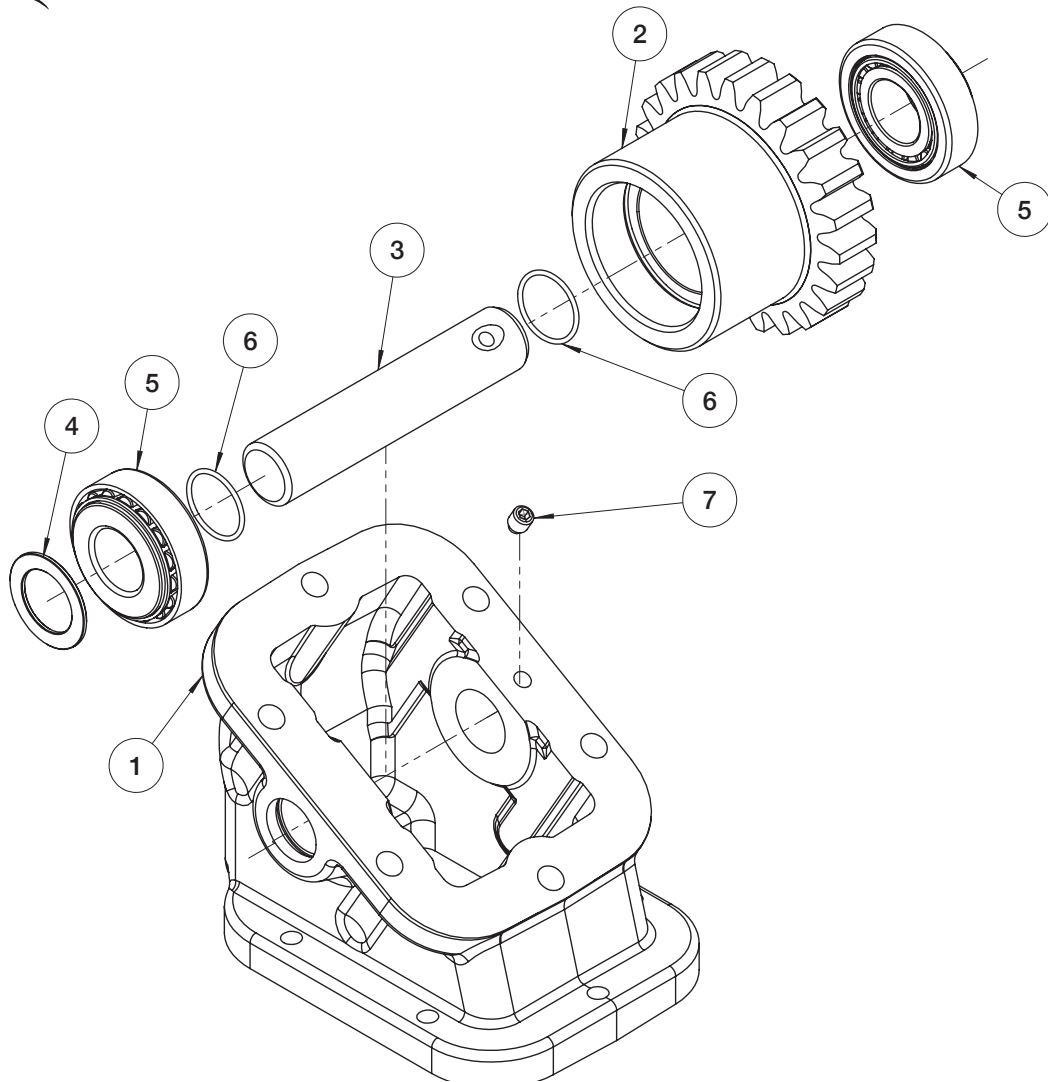




ADAPTER GEAR 40TU6830



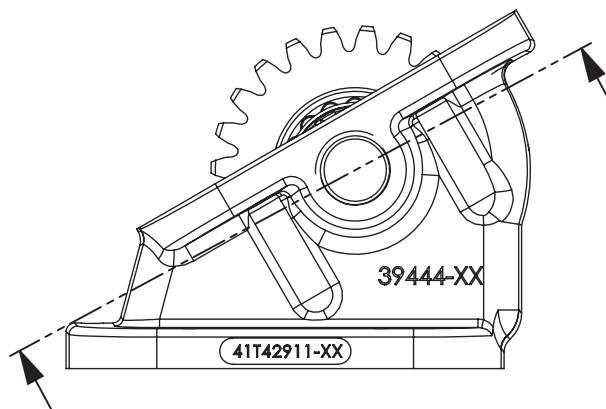
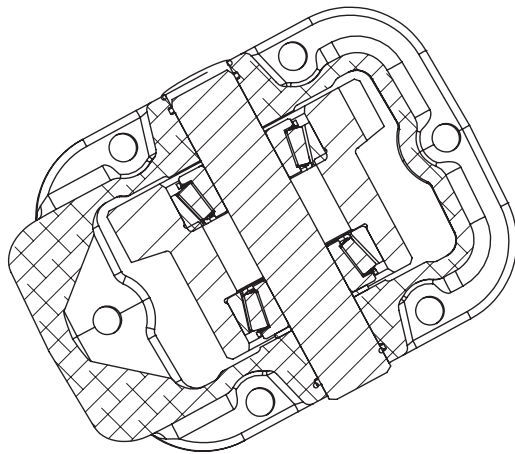
ITEM #	P/N	QTY	DESCRIPTION
1	41T42911	1	Adapter Body
2	05T42913	1	Adapter Gear
3	09T39326	1	Adapter Idler Shaft
4	18T39335 18T39351	1	Bearing Shim (as needed)
5	10T43181	2	Tapered Roller Bearing
6	12T35577	2	O-Ring, Viton
7	19T35609	1	Hex Set Screw
8	20TK6003	NS	Stud Kit
9	23MK60062SX	NS	Spacer
10	50M20048	NS	Pump Kit
11	52TK5381	NS	Gasket Kit

Assembly Instructions

A shim (Item 4) is used to obtain a bearing endplay measurement of .002" -.006".

Place both tapered roller bearings (Item 5) in the adapter gear (Item 2). Place the first shim (Item 4) on the set screw side of the adapter gear (Item 2) and push the idler shaft (Item 3) up to the surface of the gear face in the adapter body (Item 1). Measure the overall space between the inside of the adapter face and the face of the bearing, then select the appropriate shim (Item 4) if necessary, to fill this gap leaving an endplay of .002" -.006".

Completely insert the idler shaft (Item 3), then install the set screw (Item 7) in the hole in the idler shaft. Torque set screw to 10 ft.lbs.



Adapter Assembly



A Member of the Interpump Group

SP24-02 (Rev. 09-24)

201 East Jackson Street, Muncie, Indiana 47305
800-367-7867 • Fax: 765-284-6991 • info@munciepower.com

Specifications are subject to change without notice. Visit www.munciepower.com for warranties and literature. All rights reserved. © Muncie Power Products, Inc. (2024)