

H SERIES

GEAR PUMPS



DESIGNED FOR VERSATILITY

All cast iron gear pump for those low to medium flow systems. Small package size makes it ideal for direct mounting to power take-offs with SAE shaft and flanges. Both side and rear ports standard.



KEY FEATURES

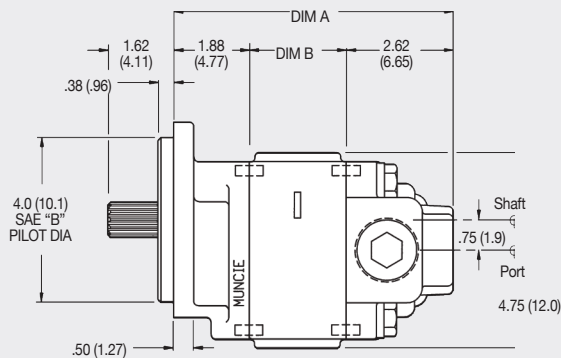
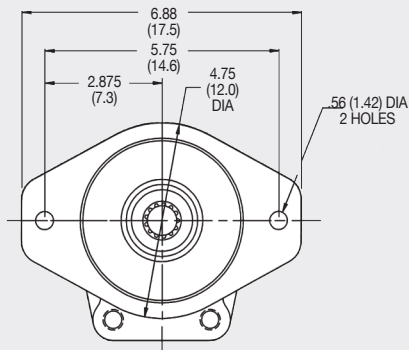
- 6 standard sizes
- Pressures to 3,500 PSI (240 Bar)
- Speeds to 3,500 RPM
- All cast iron construction
- NPT or SAE O-Ring ports
- Full one year warranty
- Solid one piece shaft
- Pressure balanced wear plates
- Dowel pin construction
- Long life sleeve type bushings

PUMP SPECIFICATIONS

MODEL NUMBER	DISPLACEMENT IN3 (CC)	MAX.* RPM	MIN.* RPM	MAX. PRES PSI (BAR)	INLET PORT SIDE & REAR (NPT)	INLET PORT SIDE & REAR (ODT)	PRES. PORT SIDE & REAR (NPT)	PRES. PORT SIDE & REAR (ODT)	WEIGHT LBS. (KG)
PH1-03	0.62 (10.2)	3,500	1,000	3,500 (241)	1¼"	1¼"	¾"	¾"	18 (8.3)
PH1-05	1.24 (20.3)	3,500	800	3,500 (241)	1¼"	1¼"	¾"	¾"	20 (9.0)
PH1-07	1.55 (25.4)	3,250	800	3,500 (241)	1¼"	1¼"	¾"	¾"	21 (9.3)
PH1-08	1.86 (30.5)	3,000	800	3,250 (224)	1¼"	1¼"	¾"	¾"	22 (10.1)
PH1-09	2.17 (35.6)	3,000	800	2,900 (200)	1¼"	1¼"	¾"	¾"	24 (10.7)
PH1-11	2.48 (40.6)	3,000	800	2,500 (172)	1¼"	1¼"	¾"	¾"	25 (11.3)

Max Inlet Vacuum - 5 in.hg. (.17 BAR)
The H Series cannot be used as a motor.

DIRECT MOUNT DIMENSIONS



MODEL	DIM. A IN. (MM)	DIM. B IN. (MM)
PH1-03	4.77 (121.2)	0.90 (22.9)
PH1-05	5.24 (133.9)	1.40 (35.6)
PH1-07	5.52 (140.2)	1.65 (41.9)

MODEL	DIM. A IN. (MM)	DIM. B IN. (MM)
PH1-08	5.77 (146.5)	1.90 (48.2)
PH1-09	6.02 (152.9)	2.15 (54.6)
PH1-11	6.27 (159.3)	2.40 (61.0)

Note: SAE "B" pilot shown. SAE "A" pilot diameter is 3.25 (82.5), .44 diameter holes on 4.19 bolt circle.

MODEL NUMBER CONSTRUCTION

P H1-07 02-B P B L-M

Pump — P

Series — H

Design — 1

GPM (LPM) @ 1000 RPM (Ref)

03 (10), 05 (20), 07 (25),

08 (30), 09 (26), 11 (41)

Shaft Size & Type

02 — SAE "B" 7/8" - 13T Spline

Mounting Flange Type

A — SAE "A" 2-Bolt

B — SAE "B" 2-Bolt

Modified

M — Ford Applications

S — Extended Studs

Rotation

L — Left Hand (CCW)

R — Right Hand (CW)

Port Location

B — Both Side and Rear Ports

R — Rear Ports

(Modified Units Only)

Port Type

P — Pipe Thread

S — Straight Thread (ODT)

Note: Tandem versions available upon special request.

OIL RECOMMENDATIONS

Muncie does not promote specific manufacturers' brands of oil. Recommendations below are guidelines; consult oil manufacturer for exact application needs.

Viscosity Range:

Viscosity Minimum: 50-60 SUS (7.5-10.5 cST)

Viscosity Optimum Continuous: 60-100 SUS (10.5-21.6 cST)

Viscosity Maximum @ Startup: 7,500 SUS (1,600 cST)

Viscosity Index: 90 Minimum

Aniline Point: 175 Minimum

Pour Point: 15°F (-10°C) Maximum

Foam Resistance: Recommended

Rust Resistance Inhibitors: Recommended

Corrosion Resistance: Recommended

Oxidation Stability: Recommended

Anti-Wear Additive: .06% Zinc Minimum*

Note: Cold weather operation requires special oil considerations. Viscosity should not exceed 7,500 SUS (1,600 cST) at lowest startup temperature. Continuous operation should range between 60-1,000 SUS (10.5-21.6 cST) for all temperature ranges. Never use diesel fuel or kerosene to thin oil.

*Anti-Wear Additives may be recommended by some motor manufacturers. However, they are optional and typically not required for gear pump or gear motors.



A Member of the Interpump Group

MP15-17 (Rev. 02-22)

201 East Jackson Street • Muncie, Indiana 47305
800-367-7867 • Fax 765-284-6991 • info@munciepower.com • www.munciepower.com

Specifications are subject to change without notice. Visit www.munciepower.com for warranties and literature. All rights reserved. © Muncie Power Products, Inc. (2015)