

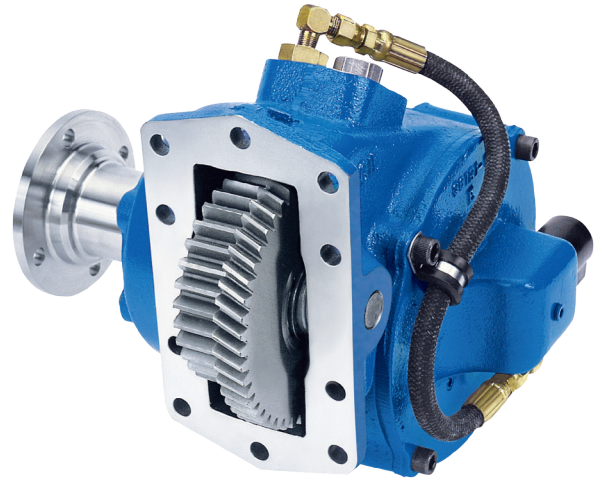
# CS10/CS11 SERIES

## CLUTCH SHIFT POWER TAKE-OFFS



### DESIGNED FOR HEAVY DUTY APPLICATIONS

Constructed with large gears, the CS10 Series PTO is built for heavy-duty applications. The CS10 Series features a drag brake and an output shaft designed around popular hydraulic pumps. For a more compact installation, the CS11 Series has a remote-mounted solenoid option.



### TARGET MARKETS

- Agriculture
- Fire & Rescue
- Material Handling
- Refuse
- Dump & Construction
- Forestry
- Mining
- Utility
- Industrial
- Oil & Gas

### KEY FEATURES

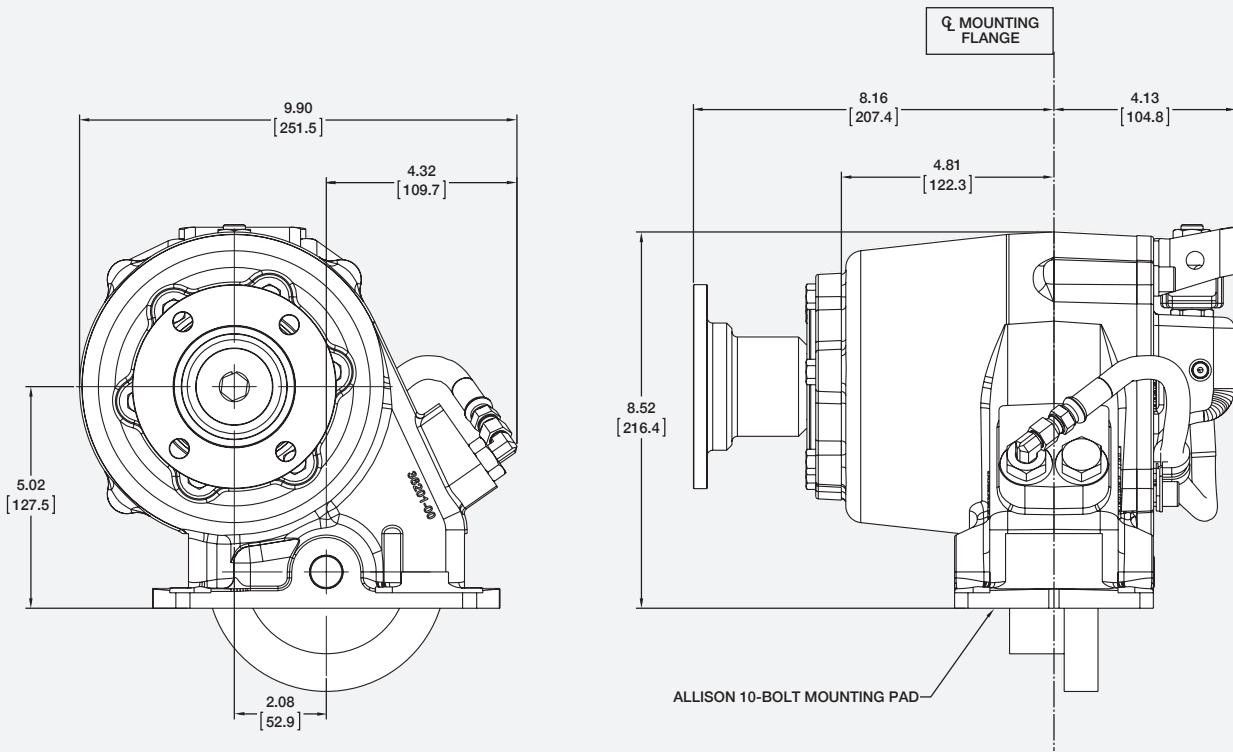
- Available outputs include SAE and DIN for direct mount pump applications, or keyed shaft and companion flange for driveline driven applications
- Standard pressure lubrication
- Rotatable direct-mount flanges allow for the pump to be positioned for maximum clearance
- Standard drag brake prevents shaft rotation in the OFF mode
- PTO output speeds up to 4,000 RPMs approved for fire pump applications

### PTO TORQUE & HORSEPOWER RATINGS

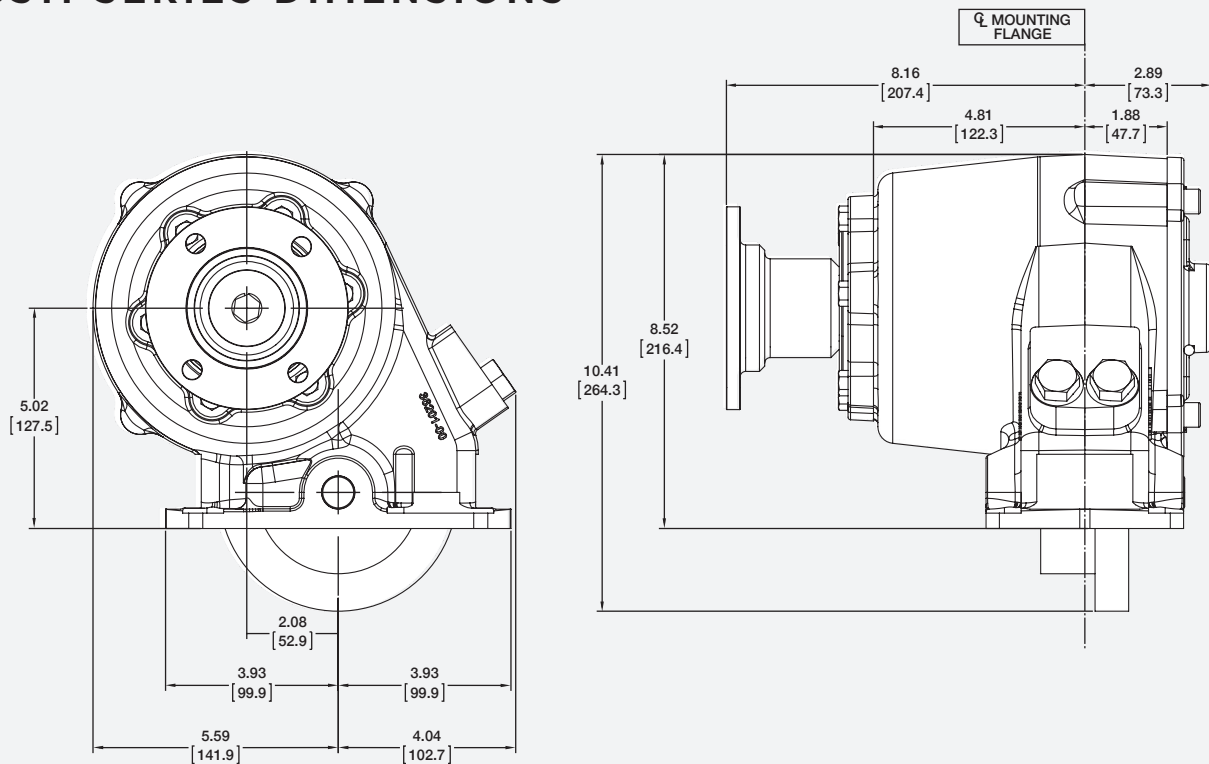
SPEED RATIO	INTERMITTENT HP @ 1,000 RPM	INTERMITTENT TORQUE LBS.FT.	CONTINUOUS TORQUE LBS.FT.	INTERMITTENT [KW] @ 1,000 RPM	INTERMITTENT TORQUE [NM]	CONTINUOUS TORQUE [NM]
05	95	500	350	[71]	[678]	[475]
06	91	480	336	[68]	[651]	[456]
07	86	450	315	[64]	[610]	[427]
08	80	420	294	[60]	[569]	[398]
10	73	385	270	[54]	[522]	[365]

Approximate Weight: 68 lbs. (30.9 Kg.)

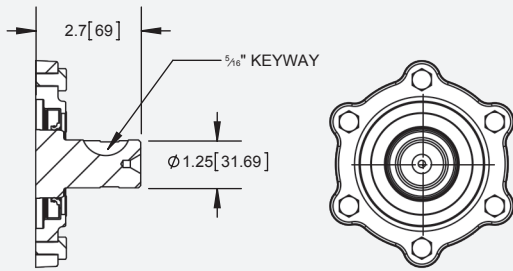
# CS10 SERIES DIMENSIONS



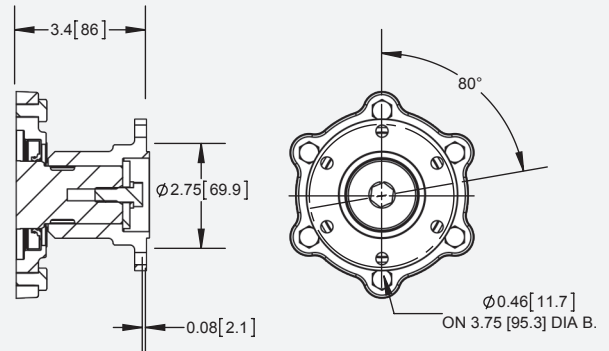
# CS11 SERIES DIMENSIONS



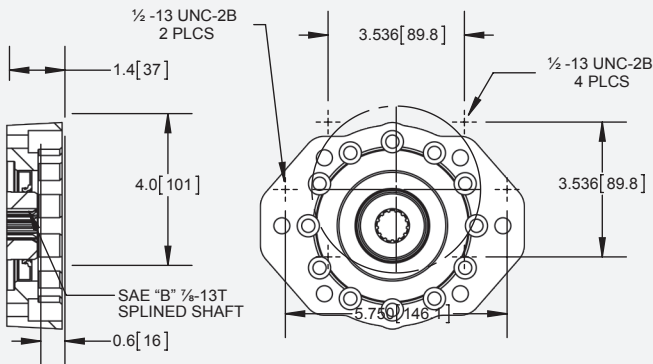
# OUTPUT OPTIONS



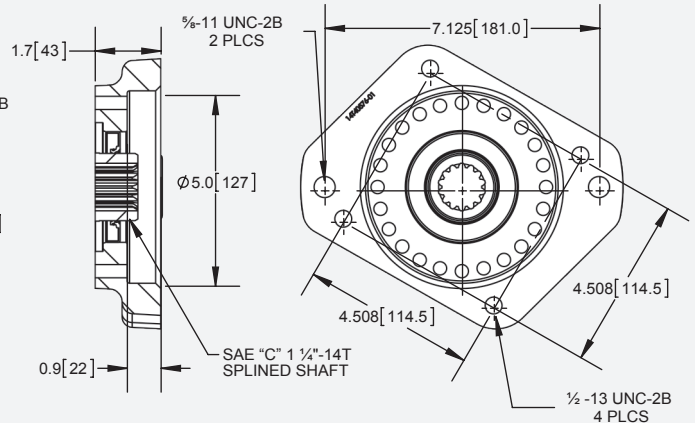
“B” Output – 1/4" Round Keyed Shaft



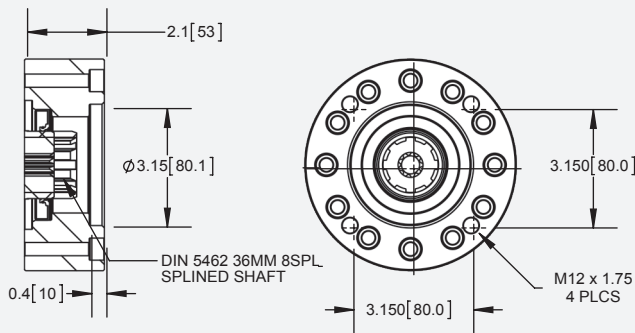
“C” Output – 1410 Companion Flange



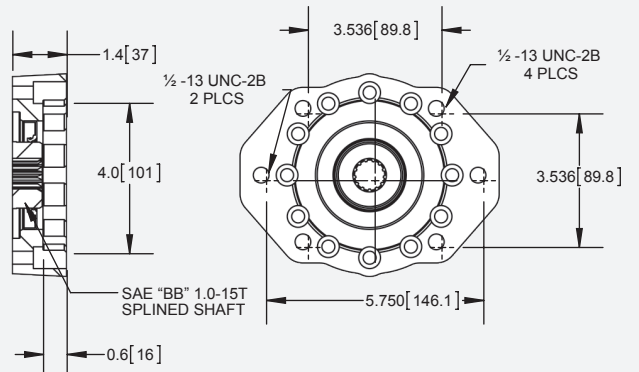
“D” Output – SAE “B” 7/8" -13T, SAE “B” 2- & 4-Bolt



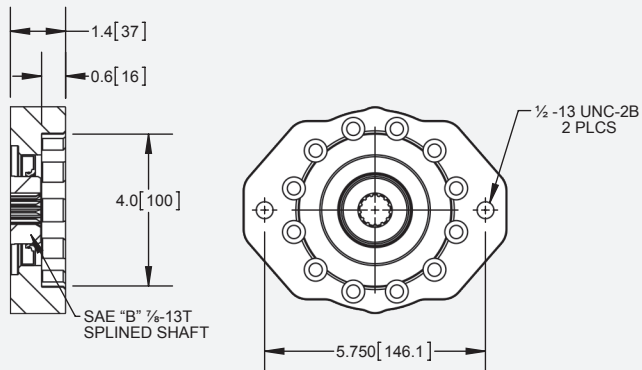
“E” Output – SAE “C” 1 1/4" -14T, SAE “C” 2- & 4-Bolt



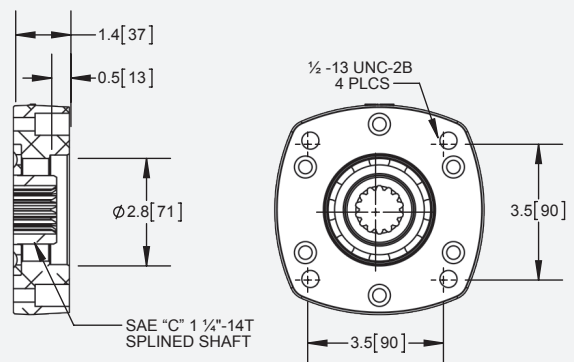
“I” Output – DIN 5462



“P” Output – SAE “BB” 1" -15T, SAE “B” 2- & 4-Bolt

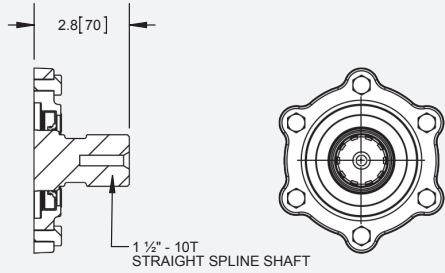


“S” Output – SAE “B” 7/8" -13T, SAE “B” 2-Bolt

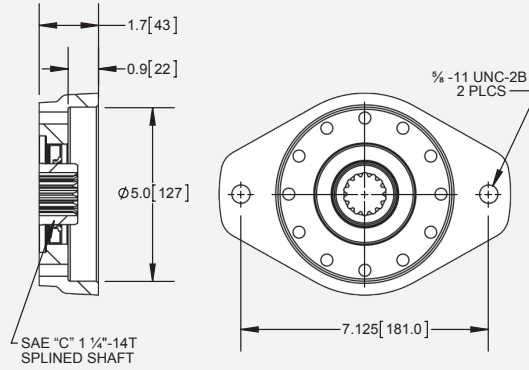


“V” Output – Extended Shaft Option \*  
\* Extended Shaft not included.

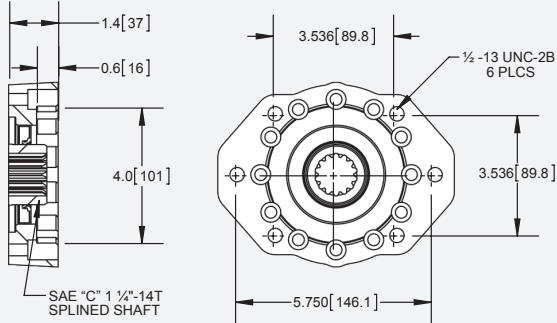
# OUTPUT OPTIONS



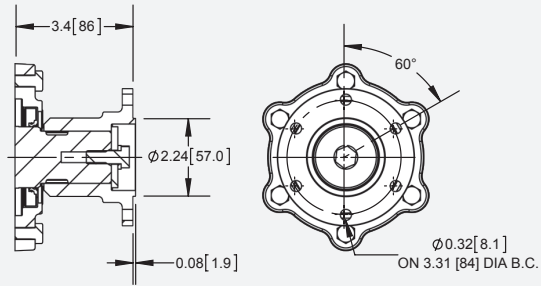
“X” Output – 1½" -10T Shaft For Companion Flange



“Y” Output – SAE “C” 1¼" -14T, SAE “C” 2-Bolt



“Z” Output – SAE “C” 1¼" -14T, SAE “B” 2- & 4-Bolt



“2” Output – DIN100 Companion Flange

# MODEL NUMBER CONSTRUCTION

**CS 10-A10 05 H 1 C X**

## PTO Series

CS – Clutch Shift

## Mounting Options

- 10 – 10-Bolt Mount
- 11 – 10-Bolt Mount Remote Solenoid

## Transmission Input Gear Option

A10 – Allison 10.16P RH

## Speed Ratio Options

- 05 – .57:1
- 06 – .64:1
- 07 – .72:1
- 08 – .85:1
- 10 – .95:1

## Shift Options

- H – 12 V Electric/Hydraulic
- J – 24 V Electric/Hydraulic

## Special Feature Options

- X – None
- B – Hose Kit for Top Opening
- D – Pulse Generator & SPD-2000
- U – Pulse Generator
- 3 – Lube Hose Optional Length – 17"
- 4 – Lube Hose Delete (Pressure Lube and Activation Hose included on all units)

## Output Options

- B – 1¼" Round Keyed Shaft
- C – 1410 Companion Flange
- D – SAE “B” 7/8" -13T, “B” 2- & 4-Bolt
- E – SAE “C” 1¼" -14, SAE “C” 2- & 4-Bolt
- I – DIN 5462
- P – SAE “BB” 1" -15T, SAE “B” 2- & 4-Bolt
- S – SAE “B” 7/8" -13T, “B” 2-Bolt
- V – Extended Shaft Option \*
- Y – SAE “C” 1¼" -14T, SAE “C” 2-Bolt
- Z – SAE “C” 1¼" -14T, SAE “B” 2- & 4-Bolt
- 2 – DIN 100 Companion Flange

## Assembly Arrangements

- 1 – Right Side, Shaft Low
- 3 – Left Side, Shaft Low



A Member of the Interpump Group

MP15-21 (Rev. 02-26)

201 East Jackson Street, Muncie, Indiana 47305  
800-367-7867 • Fax: 765-284-6991 • info@munciepower.com

Specifications are subject to change without notice. Visit [www.munciepower.com](http://www.munciepower.com) for warranties and literature. All rights reserved. © Muncie Power Products, Inc. (2015)